

TIFFIN MOTORHOMES

WHEREVER YOU GO, WE GO.

# 2006 SPECIFICATIONS

TIFFIN

ZEPHYR

PAINT COLORS



**NASA**



**DESERT SAND**



**SUNLIT SAND**

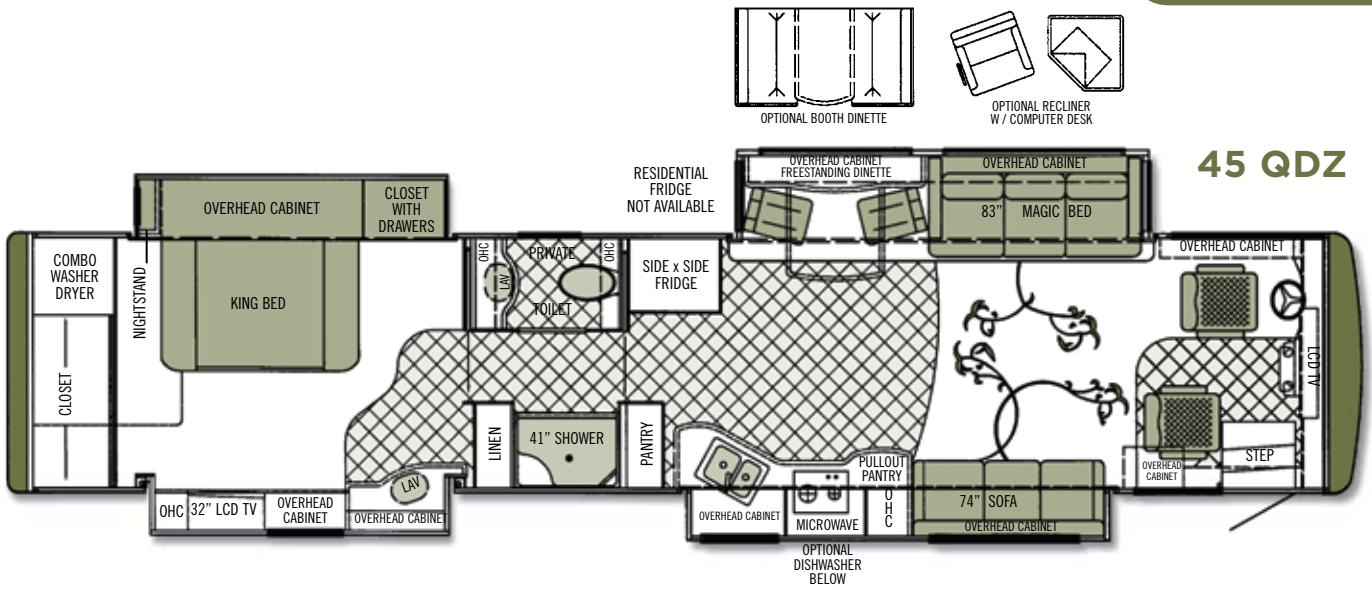
Tiffin Motorhomes, Inc. 105 2nd Street NW Red Bay, AL 35582  
Call 256.356.8661 Fax 256.356.8219 [www.tiffinmotorhomes.com](http://www.tiffinmotorhomes.com)  
For Parts and Service Call 256.356.0261

The following names are registered trademarks of Tiffin Motorhomes:  
Open Road<sup>®</sup>, Phaeton<sup>®</sup>, Allegro<sup>®</sup>, Allegro Bay<sup>®</sup>, Allegro Bus<sup>®</sup>, Zephyr<sup>®</sup>, Roughing It Smoothly<sup>®</sup>, and Pusher<sup>®</sup>.

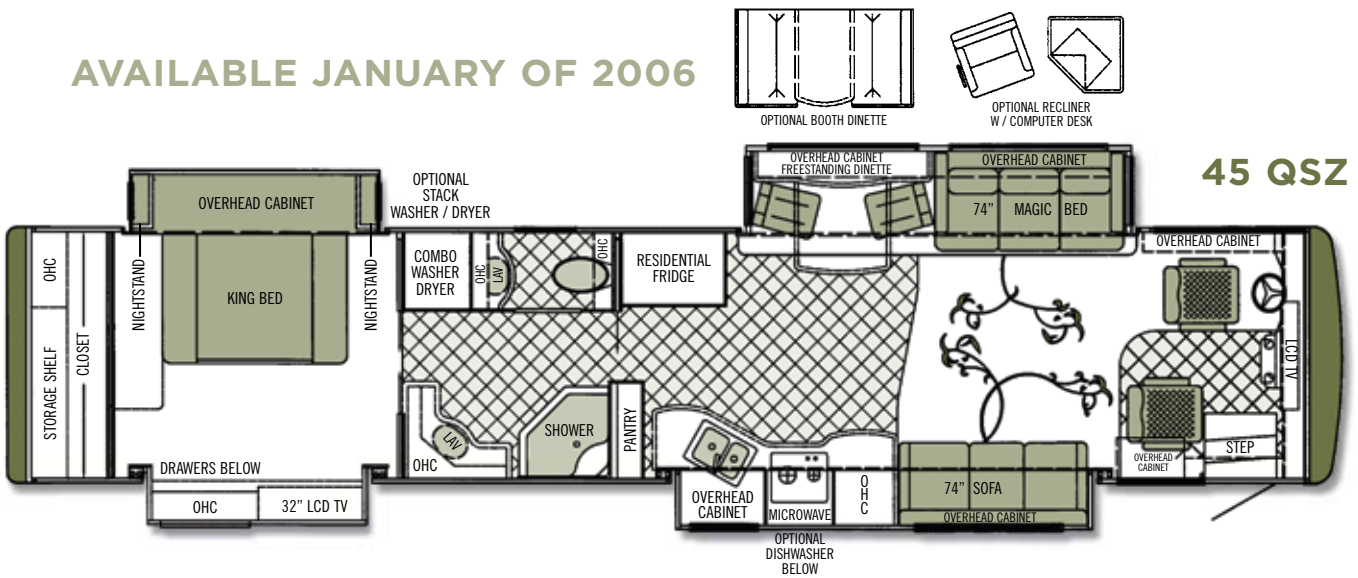
TIFFIN

ZEPHYR

FLOOR PLANS



AVAILABLE JANUARY OF 2006



Additional floorplans may be available on our website: [www.tiffinmotorhomes.com](http://www.tiffinmotorhomes.com)

Aside from our unparalleled customer service, one of the things that Tiffin has been known for over the years is innovative floorplans.

TIFFIN

ZEPHYR

CABINETS  
FABRICS  
AND SPECS



Natural Cherry



Cherry Wood

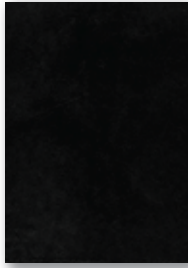


Cherry Bark

**COSMOPOLITAN**



Bedroom



Bedroom Accent



Bedroom Throw



Sofa



Living Area Accent



Dinette

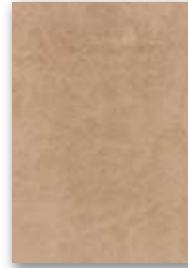


Carpet - Cosmopolitan

**TUSCANY**



Bedroom



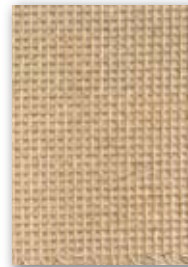
Bedroom Accent



Bedroom Throw



Sofa



Living Area Accent



Dinette



Carpet - Tuscany

Our fabric designs and choices of wood grain are sure to suit every taste. All cabinet finishes are available in combination with all fabric schemes.

## AUTOMOTIVE

### STANDARD EQUIPMENT

- 500 HP @ 1,900-2,000 rpm Cummins ISM Engine
- Spartan K2 Chassis - 500 HP
- 15,000 lb. Tow Hitch
- Tag Axle 10,000 lb.
- Allison MH 4000 Transmission
- 2 Stage Engine Brake
- 6 Cast Aluminum Wheels
- Independent Front Suspension
- Hadley SLS - Automatic Air Leveling System
- Full Air Brakes
- VIP Smart Wheel

### STANDARD EQUIPMENT

	MODEL	45 QDZ	45 QSZ
Torque (Lb.-Ft. Max. Net)		1550 @ 1,300	1550 @ 1,300
GVWR		44,600	44,600
GAWR-Front		14,600	14,600
GAWR-Rear		20,000	20,000
TAG Axle		10,000	10,000
GCWR		59,600	59,600
UVW		36,420	36,420
Fuel Tank (gallons)		150	150
Wheel Base		316" (292" From Front Axle to Drive Axle)	316" (292" From Front Axle to Drive Axle)
Tire Size		295/80R22.5	295/80R22.5
Alternator Amps		270	270

### OVERALL

	MODEL	45 QDZ	45 QSZ
Overall Length – Approximately		44' 9"	44' 9"
Overall Height with Roof Air (Maximum)		12' 10"	12' 10"
Interior Height		84"	84"
Overall Width		101"	101"
Interior Width		96"	96"
Fresh Water (Gallons)		90	90
Black Water (Gallons)		46	46
Grey Water (Gallons)		70	70
LPG Tank (Gallons; can only be filled to 80% capacity)		24.4	24.4
Minimum Garage Height		13'	13'

## STRUCTURAL

### STANDARD EQUIPMENT

- Steel Cockpit Overhead Support Structure
- Seamless One Piece Gel Coat Fiberglass Molded Roof Cap
- One Piece Molded Gel Coat Fiberglass Front & Rear Caps with Integrated Air Intake
- Laminated Gel Coat Fiberglass Sidewalls
- Steel / Aluminum Laminated Side Walls, Floor & Roof
- 1/2" Laminated Floor Decking
- Insulated Roof Duct Laminated into Roof Construction
- Steel Basement Construction
- Insulated Firewall
- Insulated Steel Cage Engine Cover

## EXTERIOR

### STANDARD EQUIPMENT

- One Piece Fiberglass Gel Coat Front & Rear Fenders with Integrated Storage
- Fiberglass Gel Coat Engine Access Door with Swing Out Hinges & Shocks
- One Piece Aluminum Face Baggage Doors with Integrated Power Locks
- Pass Through Basement with Pull Out Storage Tray (Both Sides)
- Phone, 120v & 12v Outlets Inside Storage Compartment
- One Piece Pull Out Generator Access Door
- Fiberglass Water Service Center Panel & Compartment
- Three Low Profile Roof Air Conditioners with Heat Pumps
- Easy Hook-Up Water Compartment with Built-in Hose Exits
- Multi-Port Manifold System for Hot & Cold Water Lines
- Hydraulic Heating System with Continuous Hot Water
- Water Pump Switch Located at Galley, Lavatories & Water Service Compartment
- In-Motion Satellite System (Receiver Not Included)
- Swing-Out Basement Doors
- One-Piece Panoramic Windshield
- Black Tank & Grey Tank Flush System
- Water Filter System
- Vented Fresh Water Tank for Portable Water Fill
- Power Garden Hose Reel
- Outside Shower
- Recessed Docking Lights
- Recessed Fog Lights
- Spot Light Mounted on Roof
- Roof Mounted Air Horns
- Basement & Outside Compartment Lights
- Porch Light
- Lighted Exterior Grab Handle
- Deadbolt Entrance Door Lock
- Keyless Entry System
- Air Gliding Step Cover
- Rear Roof Ladder
- Heavy Duty Rear Hitch
- Full Length "ZEPHYR" Mud Flap
- Side View & Rear Cameras
- TV Antenna
- Electric Power Cord Reel
- 3000 Watt Inverter with Generator Start
- 27" Ext. TV with AM/FM Radio and CD

	MODEL	45 QDZ	45 QSZ
4 House Batteries		S	NA
8 House Batteries		NA	S
10,000 ONAN Generator		S	NA
12,500 ONAN Generator		NA	S
2nd Slide Out Tray		O	O

## DRIVER'S COMPARTMENT

### STANDARD EQUIPMENT

- Ergonomic Wrap Around Dash with Burl Instrumentation Panels
- Back Light Lettering for Dash Controls
- Built-in Driver & Passenger Consoles with Controls
- 6-Way Power Driver & Passenger Seats with Co-Pilot Power Footrest Slide
- Integrated Pilot & Co-Pilot Seat Belts
- Storage Drawers with Built-in Beverage Tray
- Smart Wheel with Controls for ICC, Cruise & Windshield Wipers
- Adjustable Accelerator & Brake Pedals
- Power Steering
- Power Sun Visors
- Driver & Passenger Overhead Fans
- Pull Down Black-out Screens on Driver/Passenger Windows
- Diamond Pattern Chrome Step Well Area
- Pilot & Co-Pilot Map Lights
- Dual 12v Outlets in Dash Area
- Compass with Outside Temperature
- Color Rear Vision Monitor System
- CB Radio with Antenna
- Sirius Radio (Requires Subscription)
- Cellular Phone Antenna
- In-Dash AM/FM Radio
- 32" LCD TV over Cockpit Area
- Quick Power Disconnect
- Fire Extinguisher

	MODEL	45 QDZ	45 QSZ
• Computer / Navigational System		O	O

**LIVING AREA / DINETTE****STANDARD EQUIPMENT**

- Built In Dinette Cabinets with Storage (with free standing table)
- Magic Bed on Driver Side-Cloth
- Ultra Leather Magic Bed on Passenger Side
- Sculptured Carpet in Living Area
- Decorative Wall & Dinette Lighting Package
- Full Length Mirrors in Living Area
- Home Theater System with DVD Player
- Switching Box
- Carbon Monoxide Detector

	MODEL	45 QDZ	45 QSZ
• VCR		0	0
• Booth Dinette		0	0
• Recliner & Computer/End Table on Driver Side		0	0
• 1 Ultra Leather Euro Recliner & Computer/End Table on Driver Side		0	0
• 2 Ultra Leather Recliners / Center Table on Driver Side		0	NA
• 2 Ultra Leather Euro Recliners / Center Table on Driver Side		0	NA
• Fully Tiled Living Room		0	0
• Ultra Leather Magic Bed on Driver Side		0	0

**KITCHEN****STANDARD EQUIPMENT**

- Solid Surface Counter Tops with Accent Colors
- 14 Cu. Ft. Side-by-side Refrigerator with Stainless Front & Ice Maker (QDZ Only)
- Electric Residential Refrigerator with Hardwood Panel (QSZ Only)
- Recessed Princess 2-Burner Cook Top with Solid Surface Covers
- Integrated Solid Surface Galley Sink with Solid Surface Covers
- Solid Surface Splash Guards with Metal Deco Inlays
- Pull-Out Hardwood Pantry with Solid Surface Cutting Board
- Convection Microwave with Stainless Front
- Mini Blinds & Hardwood Valance
- Hardwood A/C Return & Galley Light Covers
- Triple Fluorescent Galley Light

	MODEL	45 QDZ	45 QSZ
Dishwasher with Hardwood Front		0	0

**BATH****STANDARD EQUIPMENT**

- Two Lavatories with Medicine Cabinets and Drawers
- Electric Flush Commode
- Integrated Solid Surface Lavatory Sinks
- Mini Blinds & Hardwood Valance
- Solid Surface Shower Walls with Molded Fiberglass Base
- Cosmetic Lights over Lavatories
- Towel Holders, Robe Hook, & Lavatory Accessories Package
- Raised Panel Bath and Pocket Doors

**BEDROOM****STANDARD EQUIPMENT**

- Duvet Package with Pillows
- 32" OH LCD TV
- Select Comfort King Mattress with Nightstand
- Large Wardrobe Closet with Built-in Shelf & Sliding Hardwood/Mirror Doors
- Shirt Closet with Drawers
- Built-in DVD /Radio (QDZ Only)
- Large Carpeted Storage Area beneath Bed
- LP Detector
- Combination Washer/Dryer

	MODEL	45 QDZ	45 QSZ
Stacked Washer / Dryer		NA	0

**GENERAL INTERIOR****STANDARD EQUIPMENT**

- Wall Mounted Thermostats
- 12v Attic Fans with Wall Mounted Controls
- Cable TV Hook-Up and Phone Jacks
- Solid Hardwood Arch/Raised Panel Doors
- Carpeted Cabinet Shelves
- Ball Bearing Drawer Slides
- In-Motion Digital Satellite System
- Wallpaper Covering on Sidewalls
- Padded Soft Touch Vinyl Ceiling with Recessed & Fluorescent Lights
- Day/Night Pleated Shades with Hardwood Valances Accented with Fabric
- High-gloss Tile Flooring with Metal Deco Inlays
- Built-in Speakers with Matching Hardwood Louvers
- Wall Mounted Switches for Lights & Accessories
- Rope Lights Beneath Galley and Bedroom Vanity Area
- Rope Lights in Window Valances
- 50 Amp Distribution with Surge Protection
- 12v Fuse Panel
- Battery Disconnect Switch
- Smoke Alarm
- GFI Outlets at Galley & Lavatories
- Lighted Interior Grab Handle

	MODEL	45 QDZ	45 QSZ
Natural Cherry Cabinetry		0	0
Cherry Bark Cabinetry		0	0
Cherry Wood Cabinetry		0	0