



WHY BUY A TIFFIN MOTORHOME?

Building motorhomes for over 30 years will teach you a lot. The most important lessons I've learned have been from Tiffin owners. At Tiffin, listening to the folks driving our motorhomes has always been our number one priority. That's just the Tiffin way. We view every owner of a Tiffin motorhome as more than a customer — we see them as a member of our family. And we work tirelessly to ensure the relationship stays strong.

Part of our effort is providing the best warranty in the business to all Tiffin owners. We offer:

10-YEAR UNITIZED CONSTRUCTION LIMITED WARRANTY The structural integrity of the entire coach is guaranteed for the next 10 years. Warranty includes wall separation and inner frame weakness.

5-YEAR "HYDRA-VAC" LAMINATION LIMITED WARRANTY We guarantee against all exterior fiberglass delamination or wall separation.



We're able to offer warranties like these because of the utmost confidence we get from investing more time and effort in the construction of our motorhomes than any of our competitors.

So, whether it's visiting our website, giving us a call, or just dropping by our office, we'd love to hear from you. Your concerns are our concerns. Just ask a Tiffin owner sometime.

Sincerely,

Dealer:

Tiffin Motorhomes, Inc. 105 2nd Street NW Red Bay, AL 35582
Call 256.356.8661 Fax 256.356.8219 www.tiffinmotorhomes.com

The following names are registered trademarks of Tiffin Motorhomes:
Open Road®, Phaeton®, Allegro®, Allegro Bay®, Allegro Bus®, Zephyr®, Roughing It Smoothly®, and Pusher®



ZEPHYR



TIFFIN MOTORHOMES

WHEREVER YOU GO, WE GO.

STEP INSIDE.

A mansion with the longest driveway you've ever seen.

The 2007 Zephyr is luxury on wheels. It's the road trip's version of first class. Just a warning though, most Zephyr owners end up spending a lot more time vacationing than they originally planned. After all, when you're trekking cross-country in total comfort, it's not hard to lose track of time. If you're curious to find out more, check out the enclosed DVD. It's an in-depth look at what makes the Zephyr the most celebrated motorhome out there.



SUNLIT SAND



SILVER SAND



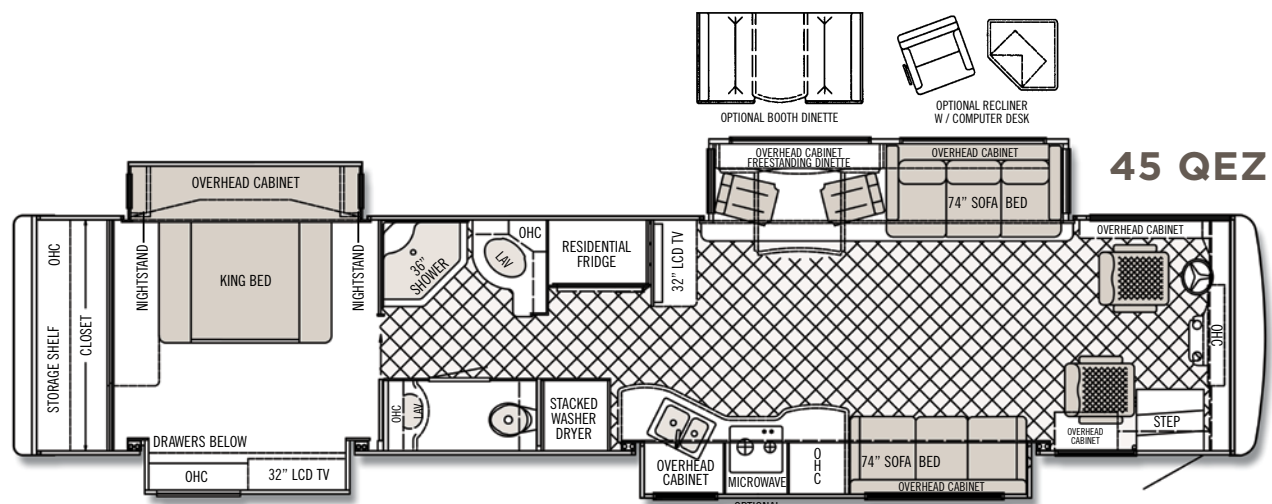
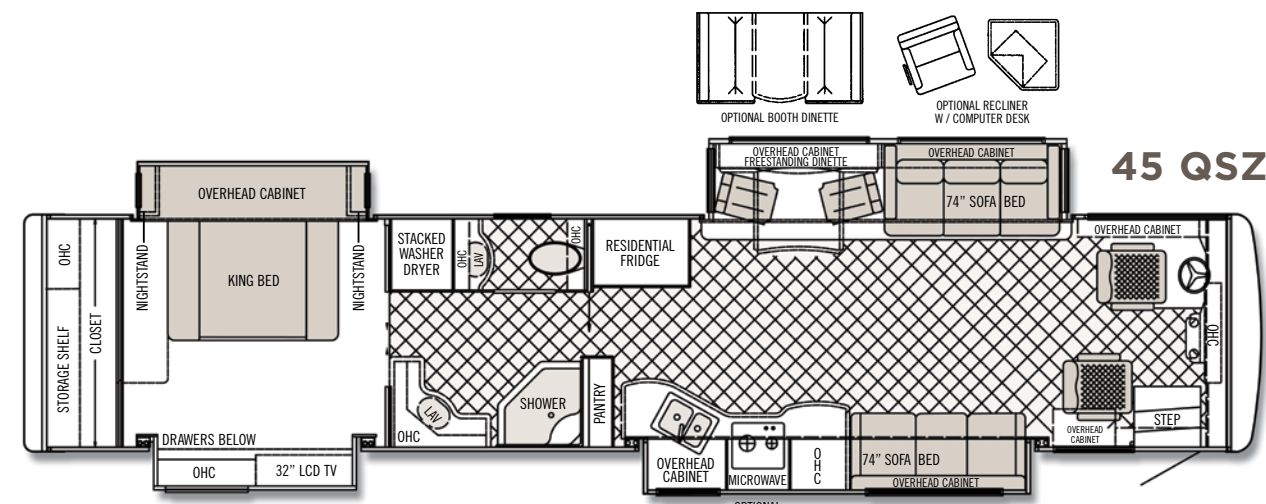
NASA

TIFFIN

ZEPHYR

FLOOR PLANS AND SPECS

2007



AUTOMOTIVE

- STANDARD EQUIPMENT**
- 500 HP @ 1,900-2,000 rpm Cummins ISM 10.8L Engine
 - Spartan K2 Chassis - 500 HP
 - 15,000 lb. Tow Hitch
 - Tag Axle 10,000 lb.
 - Allison MH 4000 Transmission
 - Two-Stage Engine Brake
 - Six Cast Aluminum Wheels
 - Independent Front Suspension
 - Hadley SLS - Automatic Air Leveling System
 - Full Air Brakes
 - VIP Smart Wheel

STANDARD EQUIPMENT

Torque (Lb.-Ft. Max. Net)	1550 @ 1,300	UVW	36,420
GVWR	44,600	Fuel Tank (gallons)	150
GAWR-Front	14,600	Wheel Base	316" (292" From Front Axle to Drive Axle)
GAWR-Rear	20,000	Tire Size	295/80R22.5
TAG Axle	10,000	Alternator Amps	270
GCWR	59,600		

OVERALL

Overall Length - Approximately	44' 9"	Fresh Water (Gallons)	90
Overall Height with Roof Air (Maximum)	12' 10"	Black Water (Gallons)	46
Interior Height	84"	Grey Water (Gallons)	70
Overall Width	101"	LPG Tank (Gallons; can only be filled to 80% capacity)	24.4
Interior Width	96"	Minimum Garage Height	13'

STRUCTURAL

- STANDARD EQUIPMENT**
- Steel Cockpit Overhead Support Structure
 - Seamless One-Piece Gel Coat Fiberglass Molded Roof Cap
 - One-Piece Molded Gel Coat Fiberglass Front & Rear Caps with Integrated Air Intake
 - Laminated Gel Coat Fiberglass Sidewalls
 - Steel/Aluminum Laminated Side Walls, Floor & Roof
 - 1/2" Laminated Floor Decking
 - Insulated Roof Duct Laminated into Roof Construction
 - Steel Basement Construction
 - Insulated Firewall
 - Insulated Steel Cage Engine Cover

DRIVER'S COMPARTMENT

- STANDARD EQUIPMENT**
- Ergonomic Wrap Around Dash with Burl Instrumentation Panels
 - Back Light Lettering for Dash Controls
 - Built-in Driver & Passenger Consoles with Controls
 - Six-Way Power Driver & Passenger Seats including Passenger Power Footrest
 - Integrated Driver & Passenger Seat Belts
 - Storage Drawers with Built-in Beverage Tray
 - Smart Wheel with Controls for ICC, Cruise & Windshield Wipers
 - Adjustable Accelerator & Brake Pedals
 - Power Steering
 - Power Sun Visors
 - Driver & Passenger Overhead Fans
 - Pull Down Black-out Screens® on Driver/Passenger Windows
 - Sliding Dash Map Drawer
 - Driver & Passenger Map Lights
 - Dual 12v Outlets in Dash Area (Driver)
 - Sliding Dash Map Drawer
 - Phone Jack 12v Outlet (Passenger)
 - Compass with Outside Temperature
 - Color Rear Vision Monitor System
 - CB Radio with Antenna
 - Sirius® Radio (Requires Subscription)
 - Cellular Phone Antenna
 - In-Dash CD/AM/FM Radio
 - 32" LCD TV over Cockpit Area (Only 45 QEZ)
 - Quick Power Disconnect
 - Fire Extinguisher

Computer / Navigational System	0	BOSE® Lifestyle Surround Sound System	0
--------------------------------	---	---------------------------------------	---

TIFFIN

ZEPHYR

CABINETS AND FABRICS



Natural Cherry

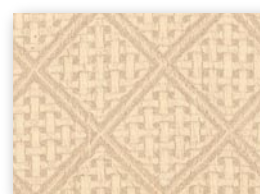


Cherry Wood

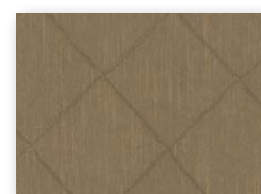


Cherry Bark

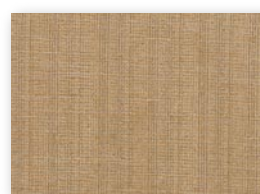
ATLANTIS



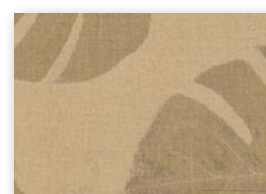
Bedroom



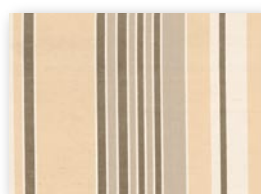
Bedroom Accent



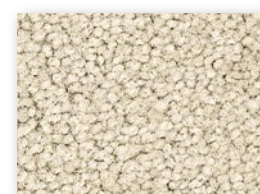
Sofa/Chair



Living Area Accent

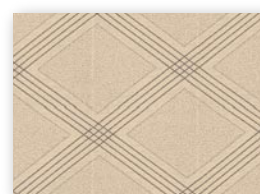


Dinette

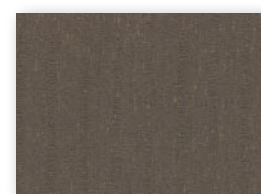


Mayan Carpet

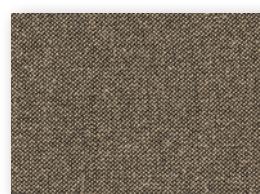
BARCELONA



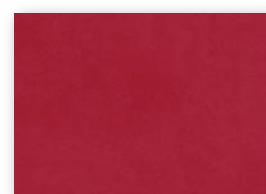
Bedroom



Bedroom Accent



Sofa/Chair



Living Area Accent



Dinette



Lobo Carpet

EXTERIOR

- STANDARD EQUIPMENT**
- One-Piece Fiberglass Gel Coat Front & Rear Fenders with Integrated Storage
 - Fiberglass Gel Coat Engine Access Door with Swing-Out Hinges & Shocks
 - One-Piece Aluminum Face Swing-Out Baggage Doors with Integrated Power Locks
 - Pass Through Basement with Pull Out Storage Tray (Both Sides)
 - 12,500 ONAN Generator
 - Phone, 120v & 12v Outlets Inside Storage Compartment
 - 3000 Watt Inverter with Generator Start
 - Eight House Batteries
 - One-Piece Pull Out Generator Access Door
 - Three Low Profile Roof Air Conditioners with Heat Pumps
 - Two 125W Solar Panels
 - Easy Hook-Up Water Compartment with Built-in Hose Exits
 - Multi-Port Manifold System for Hot & Cold Water Lines
 - Fiberglass Water Service Center Panel & Compartment
 - Hydraulic Heating System with Continuous Hot Water
 - Water Pump Switch Located at Galley, Lavatories & Water Service Compartment
 - In-Motion Low-Profile Satellite System (Receiver Not Included)
 - One-Piece Panoramic Windshield
 - Black Tank & Grey Tank Flush System
 - Water Filter System
 - Vented Fresh Water Tank for Portable Water Fill
 - Power Garden Hose Reel
 - Outside Shower
 - Recessed Docking and Fog Lights
 - Spot Light and Air Horns Mounted on Roof
 - Basement & Outside Compartment Lights
 - Porch Light
 - Lighted Exterior Grab Handle
 - Deadbolt Entrance Door Lock
 - Keyless Entry System
 - Air Gliding Step Cover
 - Rear Roof Ladder
 - Heavy Duty Rear Hitch
 - Full Length "ZEPHYR" Mud Flap
 - Power Garden Hose Reel
 - TV Antenna
 - Electric Power Cord Reel
 - 27" Ext. TV with AM/FM Radio and CD

2nd Slide Out Tray	0	Exterior 32" LCD TV Galley Slide Out	0
--------------------	---	--------------------------------------	---

LIVING AREA / DINETTE

- STANDARD EQUIPMENT**
- Built-in Dinette Cabinets with Storage (with free standing table)
 - Fully Tiled Living Room
 - Cloth Magic Sofa Bed on Driver Side
 - Decorative Wall & Dinette Lighting Package
 - Decorative Ceiling Panel
 - Home Theater System with DVD Player
 - Full Length Mirror in Living Area
 - Carbon Monoxide Detector
- | | | | |
|---|---|---|---|
| Booth Dinette | 0 | Ultra Flex Air® Hide-a-Bed Sofa Sleeper on Passenger Side | 0 |
| Leather Euro Recliner & Computer/End Table on Driver Side | 0 | Cloth Magic Bed Sofa on Passenger Side | 0 |
| Ultra Leather Magic Sofa Bed on Driver Side | 0 | Cloth Flex Air® Hide-a-Bed Sofa Sleeper on Passenger Side | 0 |

KITCHEN

- STANDARD EQUIPMENT**
- Solid Surface Counter Tops
 - Electric Residential Refrigerator with Eight House Batteries
 - Recessed Princess Two-Burner Cook Top with Solid Surface Covers
 - Integrated Solid Surface Galley Sink with Solid Surface Covers
 - Solid Surface Splash Guards
 - Pull-Out Hardwood Pantry with Solid Surface Cutting Board
 - Ceramic Tile Splashguard with Decorative Inlays
 - Convection Microwave with Stainless Front
 - Mini Blinds & Hardwood Valance
 - Built-in Soap Dispenser
 - Fluorescent Galley Light
- | | |
|------------------------|---|
| Drawer Type Dishwasher | 0 |
|------------------------|---|

BATH

- STANDARD EQUIPMENT**
- Two Lavatories with Medicine Cabinets and Drawers
 - Elongated Ceramic Toilet with Electric Flush
 - Integrated Solid Surface Lavatory Sinks (Two Lavatories)
 - Built-in Soap Dispenser
 - Mini Blinds & Hardwood Valance
 - Solid Surface Shower Walls with Inlaid Tile
 - Tinted Shower Enclosure
 - Cosmetic Lights over Lavatories
 - Towel Holders, Robe Hook, & Lavatory Accessories Package
 - Raised Panel Bath and Pocket Doors
 - Stacked Washer / Dryer

BEDROOM

- STANDARD EQUIPMENT**
- Duvet Package with Pillows
 - 32" OH LCD TV
 - Select Comfort King Mattress with Nightstands
 - Shirt Closet with Drawers
 - Large Carpeted Storage Area beneath Bed
 - Decorative Ceiling Panel
 - Large Wardrobe Closet with Built-in Drawers & Sliding Hardwood/Mirror Doors
 - Cedar-Lined Wardrobe
 - LP Detector

GENERAL INTERIOR

- STANDARD EQUIPMENT**
- Wall Mounted Thermostats
 - 12v Attic Fans with Wall Mounted Controls
 - Cable TV Hook-Up and Phone Jacks
 - Solid Hardwood Arch/Raised Panel Doors
 - Carpeted Cabinet Shelves
 - Ball Bearing Drawer Slides
 - In-Motion Digital Satellite System
 - Wallpaper Covering on Sidewalls
 - Padded Soft Touch Vinyl Ceiling
 - Day/Night Tinted Shades with Decorative Valances
 - High-Gloss Tile Flooring
 - Built-in Speakers with Matching Hardwood Louvers
 - Ceiling Flush Mounted Multi-Lighting System
 - Wall Mounted Switches for Lights & Accessories
 - Rope Lights Beneath Galley and Bedroom Vanity Area
 - Rope Lights in Window Valances
 - 50 Amp Distribution with Surge Protection
 - 12v Fuse Panel
 - Battery Disconnect Switch
 - Smoke Alarm
 - GFI Outlets at Galley & Lavatories
 - Lighted Interior Grab Handle

Natural Cherry Cabinetry (Light)	0	Cherry Wood Cabinetry	0	Cherry Bark Cabinetry (Dark)	0
----------------------------------	---	-----------------------	---	------------------------------	---