

ALLEGRO BAY

2008

2008 SPECIFICATIONS

TIFFIN MOTORHOMES

Allegro Bay

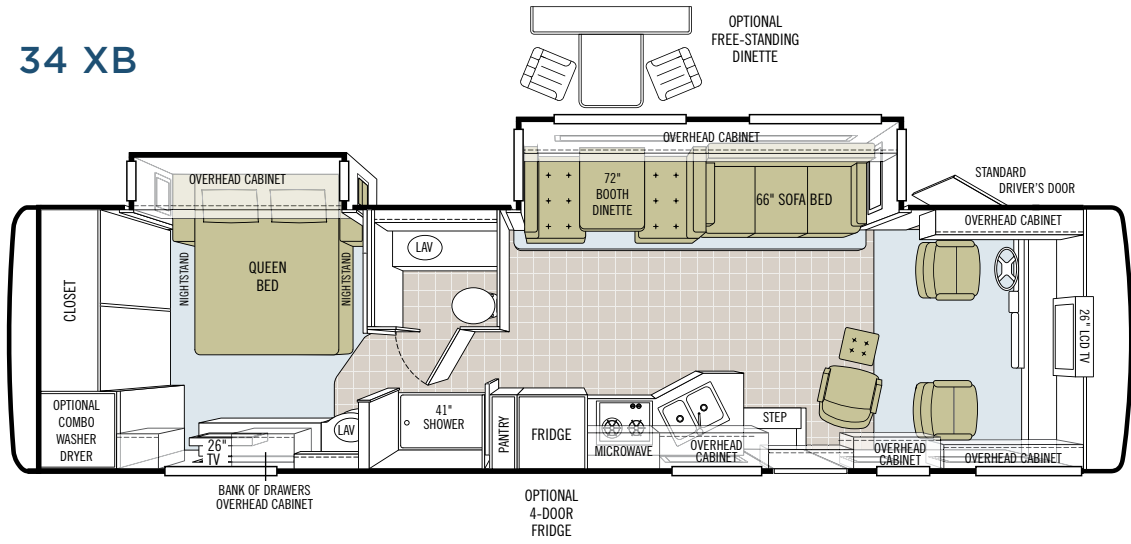


TIFFIN MOTORHOMES

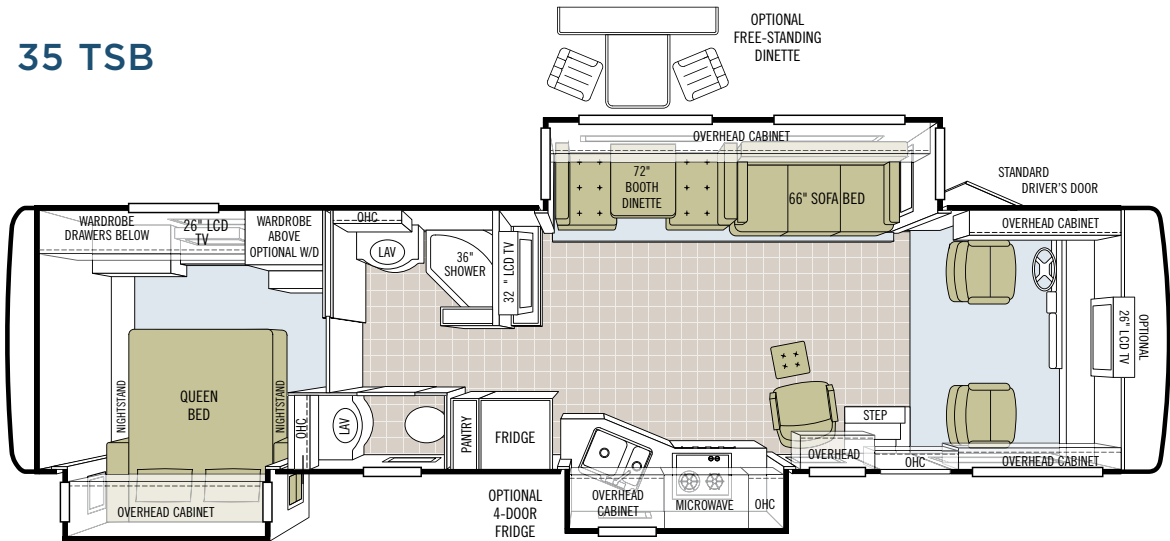
WHEREVER YOU GO, WE GO.

INTERIOR SPECS
FLOOR PLANS

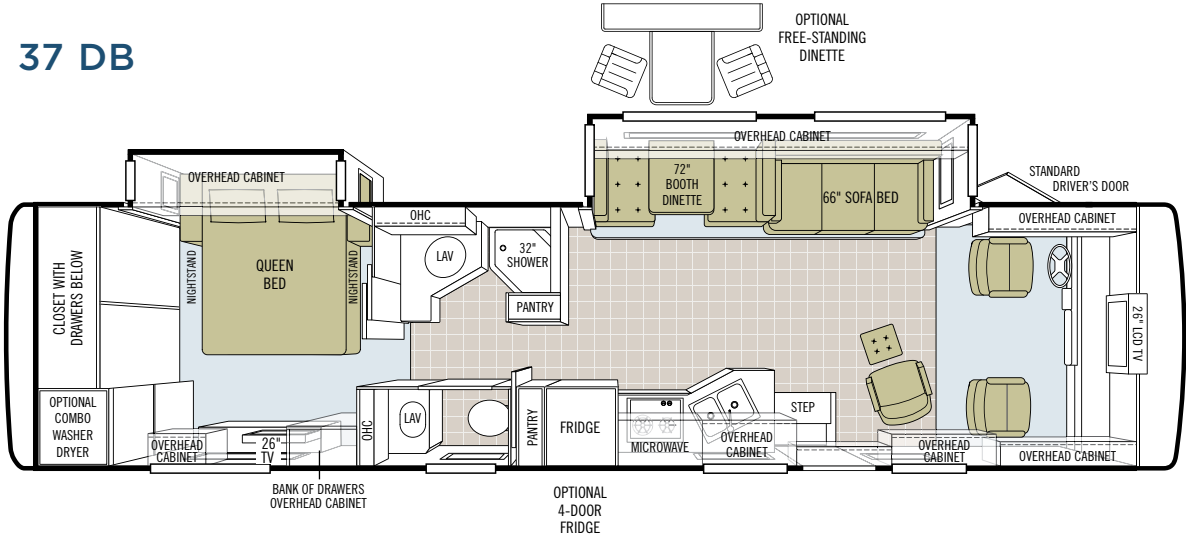
34 XB



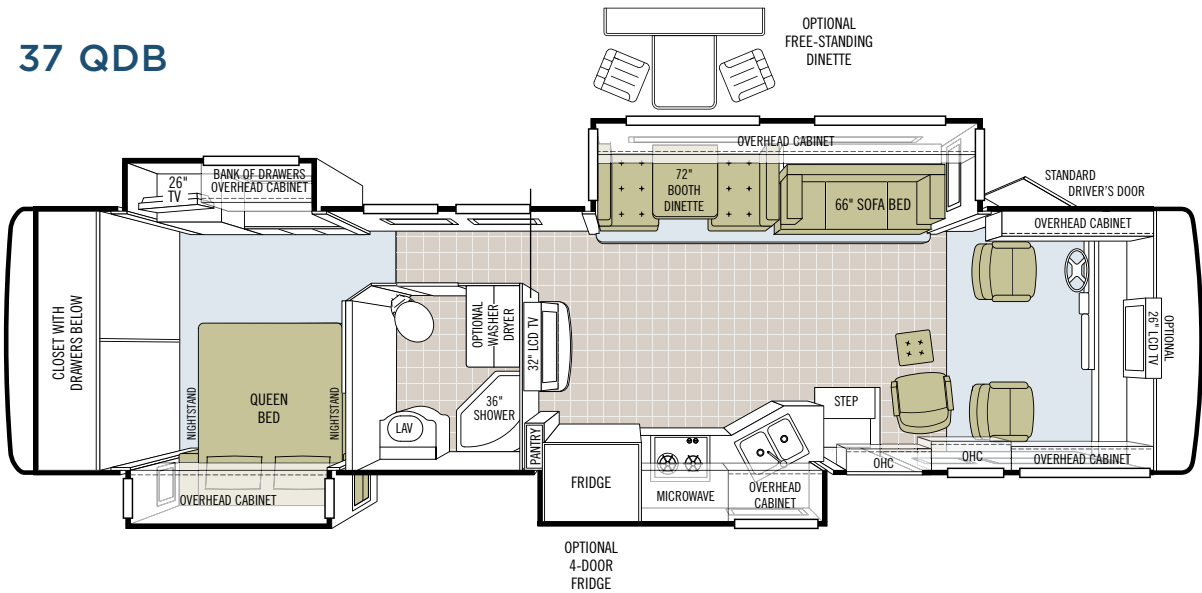
35 TSB



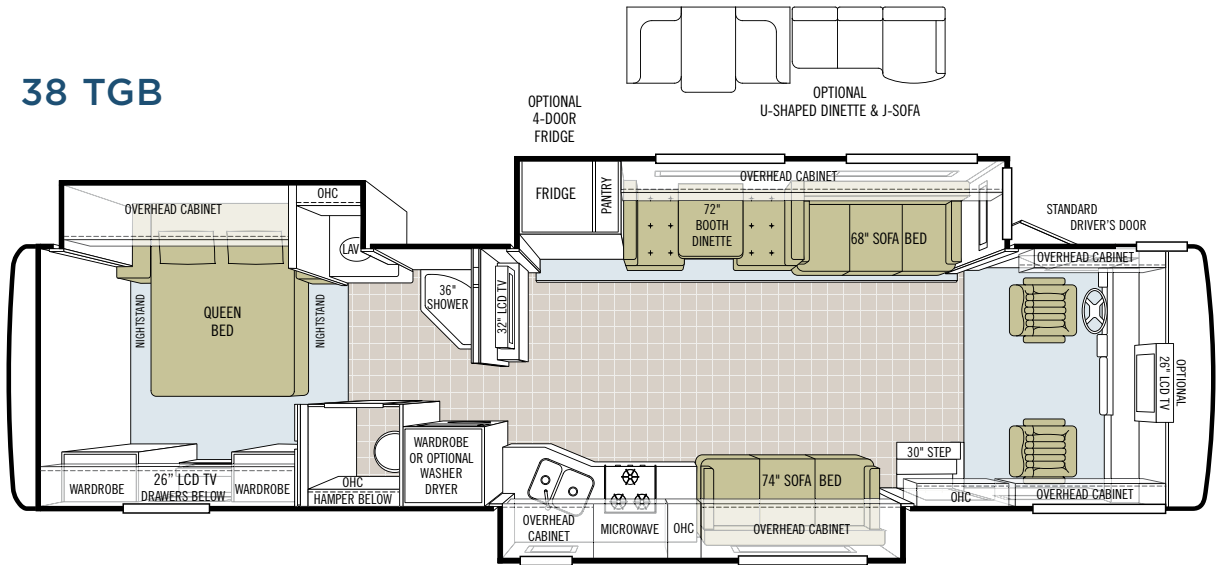
37 DB



37 QDB



38 TGB



EXTERIOR SPECS
PAINT COLORS



FIRE RED Full Body



REGAL BLUE Full Body



SILVER SAND Full Body

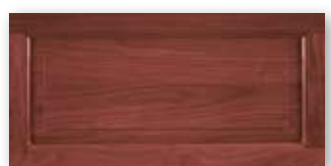
**INTERIOR SPECS
CABINETS & FABRICS**

CABINET DOORS

All cabinet doors are made of solid wood.



Natural Maple



Cherry Bark



Medium Alderwood



Carpet

BARBADOS



Bedroom



Bedroom Accent



Sofa/Chair



Living Area Accent



Dinette

LAVA



Bedroom



Bedroom Accent



Sofa/Chair



Living Area Accent



Dinette

PEWTER



Bedroom



Bedroom Accent



Sofa/Chair



Living Area Accent



Dinette

Our fabric designs and choices of wood grain are sure to suit every taste.
All cabinet finishes are available in combination with all fabric schemes.

TECHNICAL SPECS

AUTOMOTIVE

STANDARD EQUIPMENT ON ALL MODELS:

- 6.0 Onan® Quiet Diesel Generator

STANDARD EQUIPMENT ON ALL MODELS:

- Emergency Start
- Cruise Control

FREIGHTLINER

FRONT ENGINE DIESEL	34 XB - 26,000	35 TSB - 26,000	37 DB - 26,000	37 QDB - 26,000	38 TGB - 26,000	FORD CHASSIS	34 XB - 22,000
Engine	Cummins ISB	Cummins ISB	Cummins ISB	Cummins ISB	Cummins ISB	Engine – 362 HP	6.8L Triton V10
Torque (Lb.-Ft. Max. Net)	620 @ 1600	620 @ 1600	620 @ 1600	620 @ 1600	620 @ 1600	Torque (Lb.-Ft. Max. Net)	457@3250
GVWR	26,000	26,000	26,000	26,000	26,000	GVWR	22,000
GAWR – Front	10,000	10,000	10,000	10,000	10,000	GAWR – Front	7,500
GAWR – Rear	17,000	17,000	17,000	17,000	17,000	GAWR – Rear	14,500
GCWR	30,000	30,000	30,000	30,000	30,000	GCWR	26,000
UVW	19,930	20,990	20,640	20,990	20,990	UVW	18,120
Wheel Base	228	254	246	254	254	Wheel Base	228
Tire Size	255/70R 22.5	255/70R 22.5	255/70R 22.5	255/70R 22.5	255/70R 22.5	Tire Size	245/70R 22.5
Fuel Tank (Gallons)	80	80	80	80	80	Fuel Tank (Gallons)	75
Alternator Amps	160	160	160	160	160	Alternator Amps	130
Allison 2100 MH	S	S	S	S	S	Aluminum Wheels	S
						Electronically Controlled 6-Speed Automatic with Overdrive	S

OVERALL

	34 XB	35 TSB	37 DB	37 QDB	38 TGB
Overall Length – Approximately	34' 11"	35' 3"	37' 3"	37' 8"	38' 10"
Overall Height with Roof Air (Maximum)	12' 7"	12' 7"	12' 7"	12' 7"	12' 7"
Interior Height	80"	80"	80"	80"	80"
Overall Width	101"	101"	101"	101"	101"
Interior Width	96"	96"	96"	96"	96"
Fresh Water (Gallons)	84	53	84	84	84
Black Water (Gallons)	45	45	45	45	45
Grey Water (Gallons)	45	52	52	52	66
LPG Tank (Gallons; can only be filled to 80% capacity)	31.3	31.3	31.3	31.3	31.3
Minimum Garage Height	13'	13'	13'	13'	13'
Basement Storage (Cubic Feet - Approximate)	95	86	78	82	82

STRUCTURAL

STANDARD EQUIPMENT ON ALL MODELS:

- Laminated Floor, Sidewall & Roof
- Steel / Aluminum Reinforced Structure

EXTERIOR

STANDARD EQUIPMENT ON ALL MODELS:

- Fiberglass Front & Rear Caps
- Large One-Piece Tinted Windshield
- Atwood Automatic Electric Jacks
- 7.0 kw Onan® Generator on Gasoline Chassis
- 6.0 kw Onan® Diesel Generator on FRED Chassis
- Single Motor Intermittent Wiper
- Chrome, Heated Power Mirrors with Remote Adjustment
- Side-View Cameras Activated by Turn Signals
- Gel-Coat Fiberglass Exterior
- Entrance Door with Screen Door & Deadbolt
- Triple Electric Step
- 1/4" Single Pane Windows
- Exterior Patio Light
- Automatic Patio Awning
- Slide-Out Awning(s)
- Wheel Liners
- Exterior Storage Doors with Gas Shocks
- Single Handle Lockable Storage Door Latches
- Ridged Long-Life Storage Boxes
- Luggage Compartment Lights
- Undercoating
- Heated Water & Holding Tank Compartments
- Two 6 v Auxiliary Batteries
- 50-Amp Service
- Park Telephone Ready
- Cable Ready TV
- Black Holding Tank Flush System
- Exterior Rinse Hose / Shower
- 110 v Exterior Receptacle
- 110 v / 12 v Converter (55-Amp)
- Full Body Paint
- Driver's Door with Power Window
- Molded One-Piece Fiberglass Roof Cap
- TV Antenna with Booster
- CB Antenna
- Power Fantastic® Roof Vent with 3-Speed Fan
- Two 13,500 BTU Roof Air Conditioners
- Roof Ladder
- Back-up Camera
- Water Filter
- 10-Gallon Gas / Electric Water Heater
- A/C Condensation Drains

	34 XB	35 TSB	37 DB	37 QDB	38 TG B
Dual Pane Windows (Does not include entrance door)	0	0	0	0	0
Automatic HD Satellite Dish	0	0	0	0	0
Two 15,000 BTU Roof Air Conditioners with Heat Pump	0	0	0	0	0
High Definition TV Antenna	0	0	0	0	0

AUTOMOTIVE CONTINUED

STANDARD EQUIPMENT ON ALL MODELS:

- Emergency Start
- Cruise Control

WORKHORSE CHASSIS

	34 XB - 22,000	34 XB - 24,000	35 TSB - 24,000	37 DB - 24,000	37 QDB - 25,500	38 TGB - 25,500
Engine – 340 HP	8.1 L V8	8.1 L V8	8.1 L V8	8.1 L V8	8.1 L V8	8.1 L V8
Torque (Lb.-Ft. Max. Net)	455 @ 3200	455 @ 3200	455 @ 3200	455 @ 3200	455 @ 3200	455 @ 3200
GVWR	22,000	24,000	24,000	24,000	25,500	25,500
GAWR – Front	8,000	9,000	9,000	9,000	9,000	9,000
GAWR – Rear	14,500	15,500	15,500	15,500	16,500	16,500
GCWR	26,000	30,000	30,000	30,000	30,000	30,000
UVW	18,620	19,330	19,790	19,430	21,300	21,640
Wheel Base	228	228	254	246	254	254
Tire Size	235/80R 22.5	235/80R 22.5	235/80R 22.5	235/80R 22.5	235/80R 22.5	235/80R 22.5
Fuel Tank (Gallons)	75	75	75	75	75	75
Alternator Amps	145	145	145	145	145	145
Allison Automatic 6-Speed with Electric Control	S	S	S	S	S	S

DRIVER'S COMPARTMENT

STANDARD EQUIPMENT ON ALL MODELS:

- Entryway Floor Light
- Snack / Beverage Tray
- Single CD Player & AM / FM Stereo
- 12 v Dash Receptacle
- Tilt Steering Wheel
- Dual Dash Fans
- Color Back-up Monitor
- Windshield Privacy Curtain
- Fire Extinguisher
- Driver's Door
- 110 v Receptacle
- Phone / Modem Receptacle
- Non-Powered Cloth Passenger & Driver Seats (Flexsteel®)

	34 XB	35 TSB	37 DB	37 QDB	38 TGB
Powered Ultra Leather Passenger / Driver Seat (Flexsteel®)	0	0	0	0	0
Power Sun Visors	0	0	0	0	0
Side Sun Shades on Passenger / Driver Sides	0	0	0	0	0
1800 Watt Inverter	0	0	0	0	0
Sirius® Radio (Requires Subscription)	0	0	0	0	0
Front Overhead 26" LCD TV	S	0	S	0	0

LIVING AREA / DINETTE

STANDARD EQUIPMENT ON ALL MODELS:

- Ultra Leather Euro Recliner
- Cloth Air Coil® Hide-a-Bed
- Booth Dinette
- Carbon Monoxide Detector

	34 XB	35 TSB	37 DB	37 QDB	38 TGB
Ultra Leather Air Coil® Hide-a-Bed - 66" (Driver's Side)	0	0	0	0	0
Ultra Leather DE Sofa Bed - 66" (Passenger's Side)	NA	NA	NA	NA	S
Ultra Leather Magic Bed - 66"	0	0	0	0	0
Cloth Magic Bed - 66" (Driver's Side)	0	0	0	0	0
Cloth DE Sofa Bed - 66" (Passenger's Side)	NA	NA	NA	NA	0
Free-Standing Dinette with Shelf and Storage	0	0	0	0	0
26" LCD Color TV (Mid-Section)	NA	S	NA	S	S

KITCHEN

STANDARD EQUIPMENT ON ALL MODELS:

- Solid Surface Sink Covers
- Single Lever Sink Faucet with Pullout Sprayer
- Full Extension Ball Bearing Drawer Slides
- Double Bowl Kitchen Sink (Stainless Steel)
- 2-Burner Cooktop
- Convection Microwave (Stainless Steel)
- 8 Cu. Ft. Refrigerator (Stainless Steel)
- Solid Wood Kitchen Table
- Solid Surface Countertops

	34 XB	35 TSB	37 DB	37 QDB	38 TGB
3-Burner Cooktop with Oven	0	0	0	0	0
4-Door Refrigerator with Ice Maker (Stainless Steel)	0	0	0	0	0
U-Shaped Dinette and J-Sofa	NA	NA	NA	NA	0

BATH

STANDARD EQUIPMENT ON ALL MODELS:

- Medicine Cabinet
- China Toilet
- Solid Surface Countertops
- Single Lever Faucet
- Fantastic® Fan - Water Closet
- Skylight in Shower
- Glass Shower Door
- Solid Surface Sink Bowls
- Water Pump Switch

	34 XB	35 TSB	37 DB	37 QDB	38 TGB
Vanity Light	NA	S	S	S	S
Fiberglass Shower Surround	S - 41"	NA	NA	NA	NA
Fiberglass Shower	NA	S - 36"	S - 32"	S - 36"	S - 36"

BEDROOM

STANDARD EQUIPMENT ON ALL MODELS:

- Bed Comforter with Throw Pillows
- 26" LCD Color TV
- Nightstands with 110 v Receptacles
- Innerspring Queen Mattress
- LPG Leak Detector
- Solid Wood Vanity with Storage

	34 XB	35 TSB	37 DB	37 QDB	38 TGB
Select Comfort (Dual Control) Bed System – Queen	0	0	0	0	0

GENERAL INTERIOR

STANDARD EQUIPMENT ON ALL MODELS:

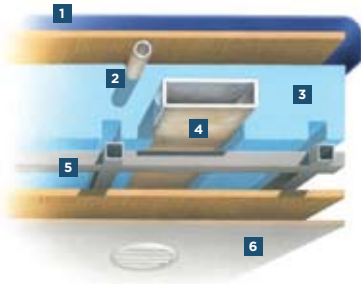
- Soft Touch Vinyl Ceiling
- Medium Alderwood Cabinetry
- Scotchgard® Treated Carpet & Fabrics
- Home Theatre Surround Sound System with Concealed Speakers
- Raised Panel, Solid Hardwood Cabinet Doors
- Armstrong® Vinyl Full-Tile Flooring
- Day / Night Pleated Shades
- Smoke Detector
- Full Extension Drawer Slides
- Wall-to-Wall Carpeting in Bedroom
- Tank Level Monitor System
- 7' Ceilings
- 12 v Disconnect switch

	34 XB	35 TSB	37 DB	37 QDB	38 TGB
Natural Maple Cabinetry (Simulated)	0	0	0	0	0
Cherry Bark Cabinetry (Simulated)	0	0	0	0	0
Combo Washer / Dryer	0	0	0	0	0
Central Vacuum Cleaner	0	0	0	0	0
One 30,000 & One 20,000 BTU Ducted Furnace	S	NA	NA	NA	NA
Two 30,000 BTU Ducted Furnaces	NA	S	S	S	S



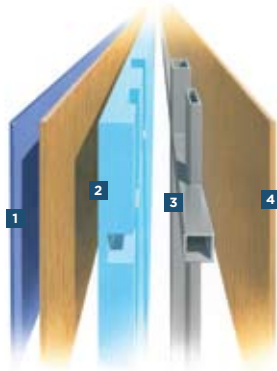
The chassis pictured above was developed by Freightliner Custom Chassis Corporation to offer the long-term dependability of diesel power, along with fuel economy and a high resale value. As you can see, it features a quiet Cummins ISB engine and an Allison 2100 MH transmission with overdrive for the 34- to 37-ft. models. With a moderate price tag, we think you'll find FRED is a friend indeed.

CONSTRUCTION SPECS



ROOF

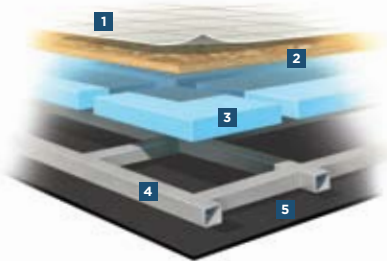
1. One-piece, moisture resistant molded fiberglass roof cap provides insulation and strength and prevents water intrusion
2. A/C Condensation Drainage System that runs internally through the roof insulation and down the sidewalls, redirecting water underneath the motorhome
3. 5 1/2" high-performance thermal insulation
4. Quiet Air Cooling System with return air and cooling exhaust ducts foil-wrapped to deflect UV rays and repel heat
5. Durable, tubular steel roof skeleton
6. Easy-to-clean soft touch vinyl ceiling panel



SIDEWALL

1. Gel-coat fiberglass outside wall panel
2. High-performance thermal insulation
3. Durable, yet lightweight, tubular aluminum wall skeleton
4. Decorative inside wall panel

All sidewalls are approximately 2" thick.



FLOOR

1. Tile flooring bonded to high-impact oriented strand board
2. High-level engineered oriented strand board
3. High-performance thermal insulation
4. Durable, tubular steel floor skeleton
5. Woven moisture barrier material

10-YEAR UNITIZED CONSTRUCTION LIMITED WARRANTY The structural integrity of the entire coach is guaranteed for the next 10 years. Warranty includes wall separation and inner frame weakness.

5-YEAR "HYDRA-VAC" LAMINATION LIMITED WARRANTY We guarantee against all exterior fiberglass delamination or wall separation.

TIFFIN MOTORHOMES, INC. 105 2ND STREET NW RED BAY, AL 35582
 CALL 256.356.8661 FAX 256.356.8219
 FOR PARTS AND SERVICE CALL 256.356.0261

For more specifics on what makes a Tiffin Motorhome, go to tiffinmotorhomes.com

The following names are registered trademarks of Tiffin Motorhomes: Open Road®, Phaeton®, Allegro®, Allegro Bay®, Allegro Bus®, Zephyr®, Roughing It Smoothly®, and Pusher®.