

# CHOOSE YOUR BEAUTIFUL.



Natural Cherry



Cherry Wood



Cherry Bark



Glazed Honey



Glazed Cherry

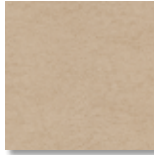


White Chocolate in Bath  
Available Only in Combination with  
Glazed Cherry or Glazed Honey

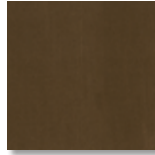
BELLAGIO



Bedroom/  
Bedroom Accent



Sofa



Living Area Accent



Dinette

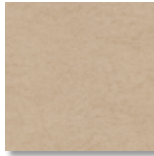


Carpet

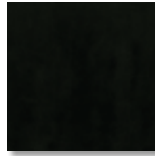
KONA



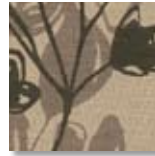
Bedroom/  
Bedroom Accent



Sofa



Living Area Accent



Dinette

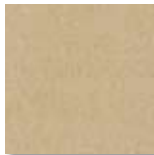


Carpet

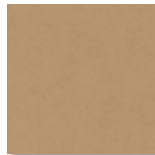
FRENCH VANILLA



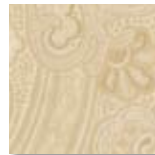
Bedroom/  
Bedroom Accent



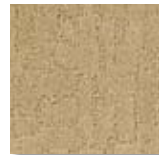
Sofa



Living Area Accent

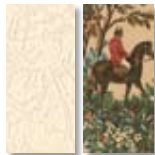


Dinette

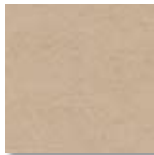


Carpet

FABRICS BY  
RALPH LAUREN



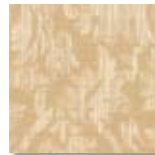
Bedroom/  
Bedroom Accent



Sofa



Living Area Accent



Dinette

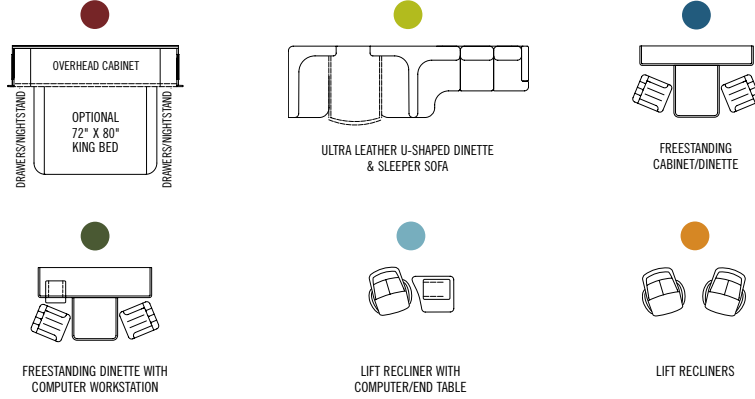


Carpet

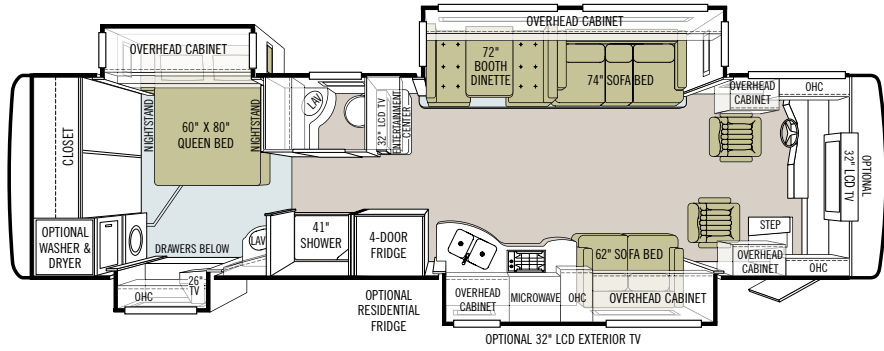
Cabinet doors are made of solid wood, and all cabinet finishes are available in combination with any fabric scheme.

All options may not be available in every model. Specifications and standard or optional equipment are subject to change without notice or obligation.

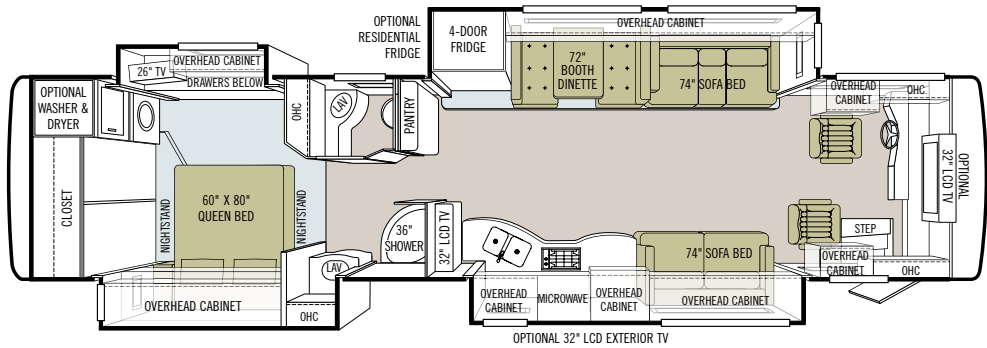
OPTION KEY



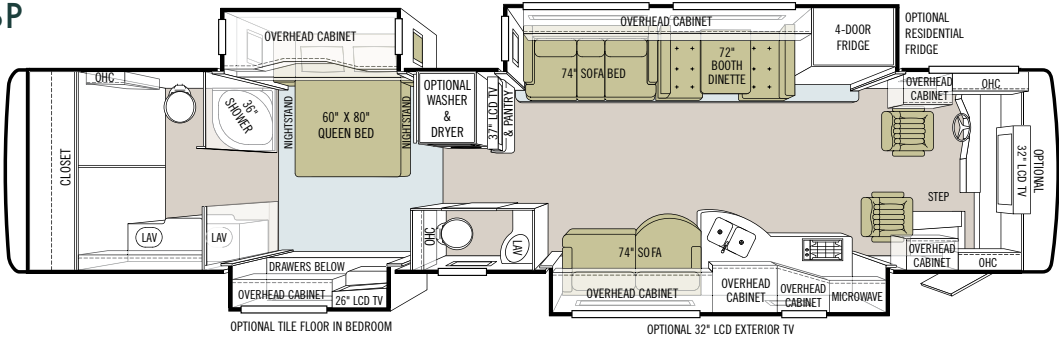
36 QSP



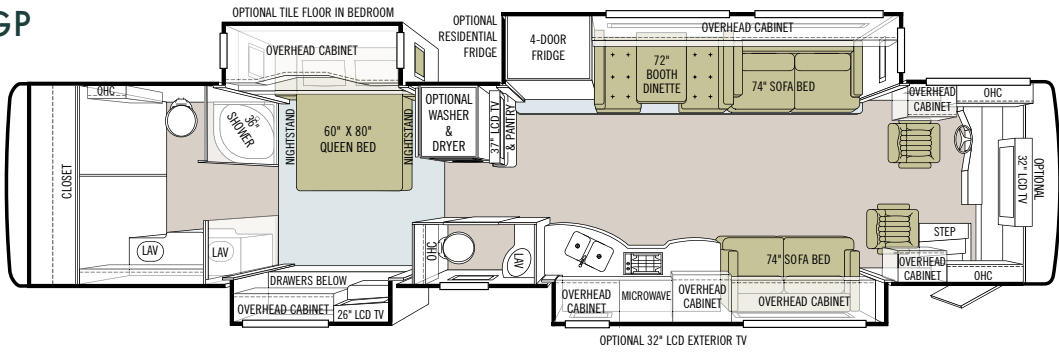
40 QXP



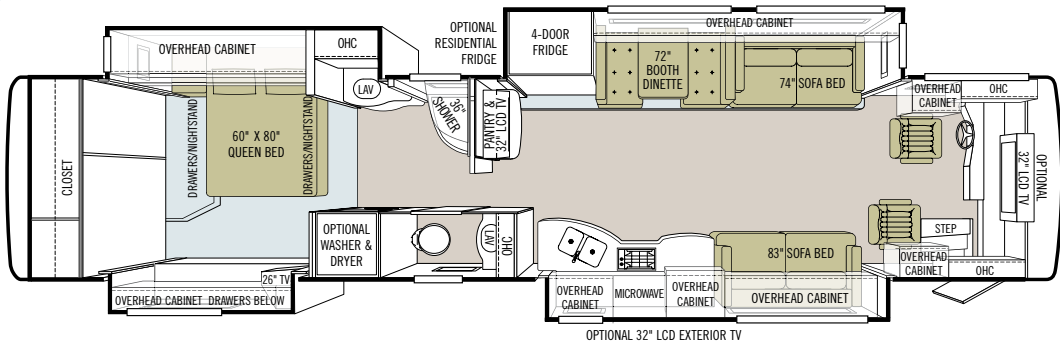
### 43 QBP



### 43 QGP



### 43 QRP



TECHNICAL SPECIFICATIONS

AUTOMOTIVE

STANDARD EQUIPMENT ON ALL MODELS:

- Allison 3000 MH 6-speed Automatic Transmission with Lock-up (Torque Converter)
- Cummins ISL Engine
- Side Mounted Radiator
- Two-stage Compression Engine Brake
- Six Air Bags on 43'
- Four Air Bags on 36' & 40'
- Aluminum Wheels
- ABS Brakes
- Cruise Control
- VIP Smart Wheel
- Fog Lights
- Emergency Start Switch
- Adjustable Gas & Brake Pedals
- Independent Front Suspension

SPARTAN / FREIGHTLINER CHASSIS	36 QSP	40 QXP	43 QBP	43 QGP	43 QRP
GVWR (Freightliner Chassis)	NA	34,600 Lb.	44,600 Lb.	44,600 Lb.	44,600 Lb.
GVWR (Spartan Chassis)	NA	34,600 Lb.	44,600 Lb.	44,600 Lb.	44,600 Lb.
GAWR - Front (Freightliner Chassis)	NA	14,500 Lb.	14,500 Lb.	14,500 Lb.	14,500 Lb.
GAWR - Front (Spartan Chassis)	NA	14,600 Lb.	14,600 Lb.	14,600 Lb.	14,600 Lb.
GAWR - Rear	NA	20,000 Lb.	20,000 Lb.	20,000 Lb.	20,000 Lb.
GAWR - Tag Axle	NA	NA	10,000 Lb.	10,000 Lb.	10,000 Lb.
GCWR (Freightliner Chassis)	NA	44,500 Lb.	54,500 Lb.	54,500 Lb.	54,500 Lb.
GCWR (Spartan Chassis)	NA	44,600 Lb.	54,600 Lb.	54,600 Lb.	54,600 Lb.
Alternator Amps	NA	160	160	160	160
Trailer Hitch Capacity	NA	10,000 Lb.	10,000 Lb.	10,000 Lb.	10,000 Lb.
Fuel Tank (Gallons) - Dual Fuel Fill	NA	150	150	150	150

POWERGLIDE CHASSIS	36 QSP	40 QXP	43 QBP	43 QGP	43 QRP
GVWR	36,600 Lb.	36,600 Lb.	49,900 Lb.	49,900 Lb.	49,900 Lb.
GAWR - Front	14,600 Lb.	14,600 Lb.	14,600 Lb.	14,600 Lb.	14,600 Lb.
GAWR - Rear	22,000 Lb.	22,000 Lb.	22,000 Lb.	22,000 Lb.	22,000 Lb.
GAWR - Tag Axle	NA	NA	13,300 Lb.	13,300 Lb.	13,300 Lb.
GCWR	46,600 Lb.	46,600 Lb.	59,900 Lb.	59,900 Lb.	59,900 Lb.
Alternator Amps	170	170	170	170	170
Trailer Hitch Capacity	10,000 Lb.	10,000 Lb.	10,000 Lb.	10,000 Lb.	10,000 Lb.
Fuel Tank (Gallons) - Dual Fuel Fill	150	150	150	150	150

OVERALL

	36 QSP	40 QXP	43 QBP	43 QGP	43 QRP
Overall Length - Approximately	36' 11"	40' 4"	43' 6"	43' 6"	43' 6"
Overall Height with Roof Air (Maximum)	12' 7"	12' 7"	12' 7"	12' 7"	12' 7"
Interior Height	84"	84"	84"	84"	84"
Overall Width	101"	101"	101"	101"	101"
Interior Width	96"	96"	96"	96"	96"
Fresh Water (Gallons)	90	90	90	90	90
Black Water (Gallons)	50	50	50	50	50
Grey Water (Gallons)	70	70	70	70	70
LPG Tank (Gallons; 80% capacity limit)	35	35	24	24	24
Minimum Garage Height	13'	13'	13'	13'	13'
Basement Storage (Cubic Feet - Approximate)	105	145	125	125	125
Wheel Base	238"	276"	294"	294"	294"
Tire Size	295/80R	295/80R	295/80R	295/80R	295/80R

STRUCTURAL

STANDARD EQUIPMENT ON ALL MODELS:

- One-piece Molded Fiberglass Roof Cap
- Laminated Floor, Sidewall & Roof
- Steel / Aluminum Reinforced Structure

## EXTERIOR

### STANDARD EQUIPMENT ON ALL MODELS:

- Fiberglass Front & Rear Caps
- Dual Fuel Fills
- BASF Full Body Paint with Front Cap Protective Film
- Large One-piece Tinted Windshield
- 17.5" Heated Chrome Power Mirrors with Remote Adjustment
- Single Motor Intermittent Wiper
- Undercoating
- 30" Wide Entry Door with Deadbolt
- Keyless Entry Door System
- Double Electric Step
- Hydraulic Automatic Leveling Jacks
- Dual Pane Tinted Windows
- Exterior Patio Light
- Automatic Door Awning
- Automatic Patio Awning
- Window Awning Package
- Slide-out Awnings with Metal-wrapped Covers
- Pass-thru Basement Storage
- Lockable Swing-out Exterior Storage Doors with Gas Shocks
- Heated Water & Holding Tank Compartments
- Tank Monitor Pad Located at Dump Station
- Auto Generator Start
- Four House Batteries
- Custom Mud Flap
- 50 Amp Service
- Power Cord Reel - 50 Amp
- Park Telephone Ready
- Cable Ready TV
- 110 V Exterior Receptacle
- Water Filter
- SeeLevel Tank Monitor
- Docking Lights
- Exterior Rinse Hose with Soap Dispenser & Paper Towel Holder
- Spotlight with Remote
- Concealed Air Horn
- Automatic Satellite Dish
- Digital TV Antenna
- CB Radio Antenna
- Power Fantastic® Roof Vent with 3-speed Fan
- Roof Ladder
- Quiet A/C Roof-ducted System
- Luggage Compartment Lights
- Magnum Sine Wave Inverter

AVAILABLE OPTIONS:	36 QSP	40 QXP	43QBP	43 QGP	43 QRP
One Storage Compartment Slide-out Tray	O	O	O	O	O
Two Storage Compartment Slide-out Trays	NA	O	O	O	O
In-motion Low Profile Satellite Dish	O	O	O	O	O
Exterior 32" LCD TV	O	O	O	O	O
Onan® 8,000 kw Generator	S	S	NA	NA	NA
Onan® 10,000 kw Generator with Three Low Profile Roof Air Conditioners with Heat Pump	NA	O	S	S	S
Two Low Profile Roof Air Conditioners with Heat Pump	S	S	NA	NA	NA
Power Solar Shade Integrated in Awning	O	O	O	O	O
125 Watt Solar Panel	O	O	O	O	O

## DRIVER'S COMPARTMENT

### STANDARD EQUIPMENT ON ALL MODELS:

- Entry Floor Light
- 12 V Disconnect Switch
- Padded Dash
- Lighted Switches
- Adjustable Gas & Brake Pedals
- Power Ultra Leather Driver & Passenger Seats Including Passenger Power Footrest
- Passenger Seat Console Box with Built-in Magazine Rack
- Color Rear Vision Monitor System with Side-view Cameras
- Side-view Cameras Activated by Turn Signals
- 12 V / 110 V Phone Jack Receptacle
- Power Solar / Privacy Windshield Shade
- Driver's Side Power Window
- Single CD Player & AM / FM Stereo
- 18" VIP Smart Steering Wheel
- Computer Slide-out Tray in Dash with Lock-out Rails
- Fire Extinguisher
- Dual Dash Fans
- Beverage Tray

AVAILABLE OPTIONS:	36 QSP	40 QXP	43QBP	43 QGP	43 QRP
Handheld CB Radio	O	O	O	O	O
Satellite Radio (Requires Subscription)	O	O	O	O	O
Rearview Mirror with Compass and Outside Temperature	O	O	O	O	O
32" LCD Front Overhead TV	O	S	O	O	O
In-dash Stereo / GPS	O	O	O	O	O
Power Solar / Privacy Shades Driver's Compartment & Living Area	O	O	O	O	O

## LIVING AREA / DINETTE

### STANDARD EQUIPMENT ON ALL MODELS:

- Ultra Leather DE Sofa Bed on Passenger's Side
- Cloth DE Sofa Bed on Driver's Side
- 12 V Receptacle & Phone Jack at Dinette
- Full Ceramic Tile Floor
- Booth Dinette with Laminate Tabletop & Solid Surface Edging

AVAILABLE OPTIONS:	36 QSP	40 QXP	43QBP	43 QGP	43 QRP
37" LCD TV / Entertainment Center	NA	NA	S	S	NA
32" LCD TV / Entertainment Center	S	S	NA	NA	S
Cloth DE Sofa Bed on Passenger's Side	O	O	NA	O	O
Ultra Leather Air Coil® Hide-a-bed on Passenger's Side	NA	O	O	O	O
Cloth Air Coil® Hide-a-bed on Passenger's Side	NA	O	O	O	O
Ultra Leather Flexsteel® DE Sofa Bed on Driver's Side	O	O	O	O	O
Ultra Leather Air Coil® Hide-a-bed on Driver's Side	O	NA	NA	NA	NA
Cloth Air Coil® Hide-a-bed on Driver's Side	O	NA	NA	NA	NA
Cloth Magic Bed on Driver's Side	O	O	O	O	O
Ultra Leather Magic Bed on Driver's Side	O	O	O	O	O

## KITCHEN

### STANDARD EQUIPMENT ON ALL MODELS:

- Polished Solid Surface Countertops
- Solid Surface Sink & Stove Covers
- Expand-an-island
- 2 ½" Deep Lighted Toe Kick
- 4-door Raised Panel Refrigerator with Icemaker
- Single Lever Sink Faucet with Built-in Sprayer
- Residential Double Bowl Stainless Steel Sink
- 12 V Fluorescent Light
- Stainless Steel Convection Microwave with Exterior Venting
- 2-burner Glass Cooktop
- Galley Soap Dispenser
- Sink & Stove Cover Racks (Underneath the Sink)

AVAILABLE OPTIONS:	36 QSP	40 QXP	43 QBP	43 QGP	43 QRP
3-burner Cooktop with Gas Oven (NA with Dishwasher)	O	O	NA	O	O
Dishwasher (Drawer type)	O	O	O	O	O
Residential Stainless Steel Refrigerator	O	O	O	O	O

## BATH

### STANDARD EQUIPMENT ON ALL MODELS:

- Medicine Cabinet with Vanity Lights
- Fantastic® 3-speed Fan (Water Closet Only)
- Skylight in Shower with Sliding Solar Cover
- Solid Surface Vanity Top & Bowl
- Electric Flush Toilet
- Moen® Faucets

## BEDROOM

### STANDARD EQUIPMENT ON ALL MODELS:

- Innerspring Queen Mattress (60" X 80")
- Bed Comforter with Throw Pillows
- Solid Surface Nightstand Tops
- Wardrobe with Automatic Light
- Wood Headboard
- Solar/Privacy Shades
- Pre-wired for DVD & Satellite Receiver
- Laundry Hamper
- 26" LCD TV
- Ceiling Fan

AVAILABLE OPTIONS:	36 QSP	40 QXP	43 QBP	43 QGP	43 QRP
Select Comfort™ Queen Mattress (60" X 80")	O	O	O	O	O
Select Comfort™ King Mattress (72" X 80")	NA	O	O	O	O
Memory Foam Queen Mattress (60" X 80")	O	O	O	O	O
Memory Foam King Mattress (72" X 80")	NA	O	O	O	O
Tile Flooring in Bedroom	NA	NA	O	O	NA

## GENERAL INTERIOR

### STANDARD EQUIPMENT ON ALL MODELS:

- 7" Ceilings
- Soft Touch Vinyl Ceilings
- Raised Panel Cabinet Doors
- Recessed Ceiling Lighting
- Adjustable Shelving in Some Cabinets
- Air Driven Step Well Cover
- Washer / Dryer Ready
- SeeLevel Tank Monitor
- Smoke Detector
- Central Vacuum Cleaner
- Carbon Monoxide Detector
- Ceramic Tile Flooring in Kitchen, Bath, Entrance Landing & Living Room
- Complete Cable Wiring Interfacing with Surround Sound & Satellite Receiver
- Enclosed Surround Sound Speakers
- LPG Leak Detector
- Energy Management System

AVAILABLE OPTIONS:	36 QSP	40 QXP	43 QBP	43 QGP	43 QRP
Combo Washer / Dryer	O	O	O	O	O
Stacked Washer / Dryer	O	O	O	O	O
10-gallon DSI Gas / Electric Water Heater	S	S	NA	NA	NA
Hydronic Heating System	O	O	S	S	S
Two 30,000 BTU Ducted Furnaces	S	S	NA	NA	NA
All Electric Coach	O	O	O	O	O

All options may not be available in every model. Specifications and standard or optional equipment are subject to change without notice or obligation.

FULL BODY PAINT COLORS



GOLD CORAL



MAROON CORAL



NASA



SILVER SAND

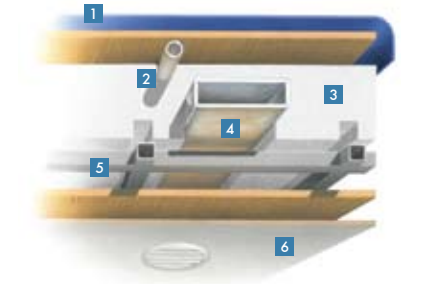


SUNLIT SAND



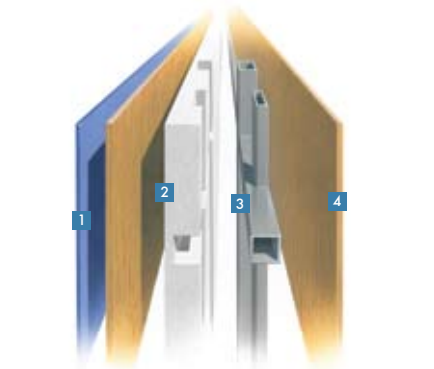
ROCKY MOUNTAIN BROWN

## CONSTRUCTION SPECIFICATIONS



### ROOF

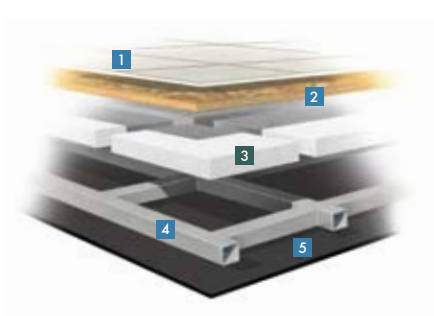
1. One-piece, moisture resistant molded fiberglass roof cap provides insulation and strength and prevents water intrusion
2. A/C Condensation Drainage System that runs internally through the roof insulation and down the sidewalls, redirecting water underneath the motorhome
3. 5½" formed insulation
4. Quiet Air Cooling System with return air and foil-wrapped cooling exhaust ducts
5. Durable, tubular aluminum roof skeleton
6. Easy-to-clean soft touch vinyl ceiling panel



### SIDEWALL

1. Gel-coat fiberglass outside wall panel
2. High-performance thermal insulation
3. Durable, yet lightweight, tubular aluminum wall skeleton
4. Decorative inside wall panel

All sidewalls are approximately 2" thick.



### FLOOR

1. Ceramic tile floor bonded to high-impact oriented strand board
2. High-level engineered oriented strand board
3. High-performance thermal insulation
4. Durable, tubular steel floor skeleton
5. Woven moisture barrier material

**10-YEAR LIMITED UNITIZED CONSTRUCTION WARRANTY** The structural integrity of the entire coach is guaranteed for the next 10 years. Warranty includes wall separation and inner frame weakness.

**5-YEAR LIMITED LAMINATION WARRANTY** We guarantee against all exterior fiberglass delamination or wall separation.

TIFFIN MOTORHOMES, INC. 105 2ND STREET NW, RED BAY, AL 35582  
CALL 256.356.8661 FAX 256.356.8219  
FOR PARTS AND SERVICE CALL 256.356.0261

For more specifics on what makes a Tiffin Motorhome, go to [tiffinmotorhomes.com](http://tiffinmotorhomes.com)

The following names are registered trademarks of Tiffin Motorhomes: Open Road®, Phaeton®, Allegro®, Allegro RED®, Allegro Bay®, Allegro Bus®, Zephyr®, Roughing It Smoothly®, and Pusher®.