

RED

Allegro



TIFFIN MOTORHOMES ALLEGRO® RED 2010

2010



TIFFIN MOTORHOMES
WHEREVER YOU GO, WE GO.



ROCKY MOUNTAIN BROWN EXTERIOR



GET READY TO FALL IN LOVE ALL OVER AGAIN.

When owners told us they wanted a rear engine model that would incorporate the Allegro's affordable luxury, we promised to deliver. Now we invite you to meet the Allegro RED. It's a whole new Tiffin for a whole new era. It's a phenomenal value for a diesel pusher – the most value-packed new model we've ever introduced. Choose from five exterior colors, each of which comes standard with a protective film layer over the front cap to preserve the finish. And the interior is as accommodating as the exterior is durable. With a sleeper sofa and an optional floor plan with bunk beds, even more friends and family can come along for one of our most comfortable rides yet. It may be the new Tiffin in town, but when you're in the mood for tailgating or trailblazing, the Allegro RED performs like an old pro.

2010
Allegro RED



THE PEACE AND QUIET START WHEN YOU TURN THE KEY.

COCKPIT

The Allegro RED's 340 HP rear diesel engine provides you with all kinds of advantages. Fuel economy is improved. The peak torque comes out at 660. And with the engine in the rear, you get a quieter ride with much more legroom. Add in side-view cameras to improve visibility, along with optional Halo leather driver and passenger seats, and you get one of Tiffin's most complete cockpits yet. Meanwhile, under-coach storage space gives you ample room to store luggage, tailgating equipment and your favorite gear. And when you're ready to come indoors, the premium electronics provide an entertainment setup that you, your family and friends will love.





10
Production
vehicle
to manual and
parking brake.

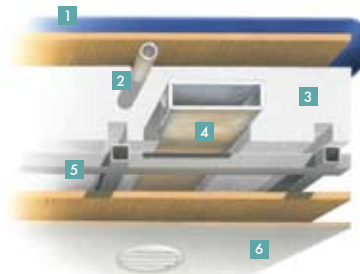
R
N
P



ACTUALLY, YOU CAN ENGINEER HAPPINESS.

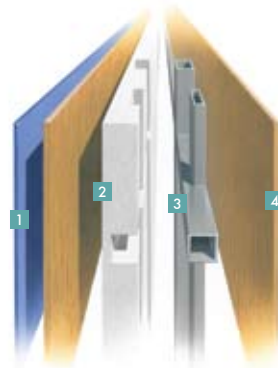
At Tiffin, our engineers employ innovative construction techniques, like the unique drainage system in the roof to channel A/C condensation. And we use high-quality components, such as laminated sidewalls and floors to provide ultimate durability and sturdiness on the road. This ensures that our owners enjoy lasting value, year after year. For a complete list of specifications and options, please visit tiffinmotorhomes.com

CONSTRUCTION SPECIFICATIONS



ROOF

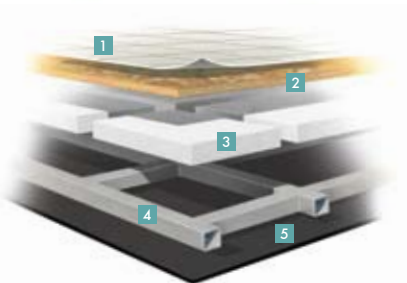
1. One-piece, moisture resistant molded fiberglass roof cap provides insulation and strength and prevents water intrusion
2. A/C Condensation Drainage System that runs internally through the roof insulation and down the sidewalls, redirecting water underneath the motor home
3. 5 1/2" formed insulation
4. Quiet Air Cooling System with return air and foil-wrapped cooling exhaust ducts
5. Durable, tubular aluminum roof skeleton
6. Easy-to-clean soft touch vinyl ceiling panel



SIDEWALL

1. Gel-coat fiberglass outside wall panel
2. High-performance thermal insulation
3. Durable, yet lightweight, tubular aluminum wall skeleton
4. Decorative inside wall panel

All sidewalls are approximately 2" thick.



FLOOR

1. Vinyl tile floor bonded to high-impact oriented strand board
2. High-level engineered oriented strand board
3. High-performance thermal insulation
4. Durable, tubular steel floor skeleton
5. Woven moisture barrier material

TECHNICAL SPECIFICATIONS STANDARD EQUIPMENT FOR ALLEGRO RED 36 QSA AND 38 QBA:

AUTOMOTIVE			
• Raised Rail Chassis	• Air Ride Suspension	• Full Air Brakes	• Exhaust Brake

FREIGHTLINER REAR ENGINE DIESEL CHASSIS			
Engine	Cummins ISB 6.7-liter Electronic Diesel, Turbocharged, Aftercooled		
Peak HP	340 HP @ 2,600 rpm		
Peak Torque	660 @1,600 rpm		
Transmission	Allison 2500 MH 6-speed Automatic with Lock up		
GAWR - Front	12,000 Lb.		
GAWR - Rear	17,500 Lb.		
GVWR	29,500 Lb.		
GCWR	33,000 Lb.		
Wheel Base	208" (34 QFA) 228" (36 QSA) 252" (38 QBA)		
Tire Size	275/80R22.5		
Fuel Tank (Gallons)	100 Gallon Dual Fuel Fill		
Alternator Amps	160		
Trailer Hitch Capacity	5,000 Lb.		

OVERALL			
Overall Length (Approximate)	34' 10" (34 QFA) 36' 9" (36 QSA) 38' 9" (38 QBA)	Fresh Water (Gallons)	90
Overall Height with Roof Air (Maximum)	12' 7"	Black Water (Gallons)	50
Interior Height	84"	Grey Water (Gallons)	70
Overall Width	101"	LPG Tank (Gallons; can only be filled to 80% capacity)	24
Interior Width	96"	Minimum Garage Height	13'
Basement Storage (Cubic Feet - Approximate)	57 (34 QFA) 123 (36 QSA) 155 (38 QBA)		

STRUCTURAL		
• Laminated Floor, Sidewall & Roof	• Steel/Aluminum Reinforced Structure	• One-piece Molded Fiberglass Roof Cap

EXTERIOR			
<ul style="list-style-type: none"> • Fiberglass Front & Rear Caps • Tinted One-piece Windshield • 6.0 kw Onan® Diesel Generator • Horizontal Mounted Wipers • Heated Power Mirrors • Exterior Patio Light • Power Patio Awning • Slide-out Awning(s) • Chrome Wheel Liners 	<ul style="list-style-type: none"> • Two 13,500 BTU High Profile Roof Air Conditioners • Quiet A/C Roof-ducted System • Double Electric Step • 1/4" Thick Single Pane Windows • Convenient Access Doors with Gas Shocks • Ridged Long-life Storage Boxes • Single Handle Lockable Storage Door Latches • Heated Water & Holding Tank Compartments • Four 6 V Auxiliary Batteries 	<ul style="list-style-type: none"> • Park Telephone Ready • Digital TV Antenna • Cable Ready TV • 50 Amp Service • Black Holding Tank Flush System • Exterior Rinse Hose / Shower • Back-up Monitor • 110 V Exterior Receptacle • Undercoating 	<ul style="list-style-type: none"> • Roof Ladder • External Tripod Satellite Hook-up • Exterior Storage Compartment Lights • Side-view Cameras Activated by Turn Signals • BASF Full Body Paint with Front Cap Protective Film • Hydraulic Automatic Leveling Jacks

AVAILABLE OPTIONS:	34 QFA	36 QSA	38 QBA
8.0 kw Onan® Generator	<input type="radio"/>	<input type="radio"/>	<input type="radio"/>
Automatic Satellite	<input type="radio"/>	<input type="radio"/>	<input type="radio"/>
Automatic Entry Door Awning	<input type="radio"/>	<input type="radio"/>	<input type="radio"/>
Hadley Air Horn	<input type="radio"/>	<input type="radio"/>	<input type="radio"/>
Two 15,000 BTU High Profile Roof Air Conditioners with Heat Pump (8.0 kw Generator Only)	<input type="radio"/>	<input type="radio"/>	<input type="radio"/>
CB Antenna	<input type="radio"/>	<input type="radio"/>	<input type="radio"/>

DRIVER'S COMPARTMENT			
<ul style="list-style-type: none"> • Entry Floor Light • Step Switch & 12 V Disconnect Switch • Non-power Cloth Driver & Passenger Seats 	<ul style="list-style-type: none"> • Lighted Instrument Panel • Single CD Player & AM/FM Stereo • 12 V Dash Receptacle 	<ul style="list-style-type: none"> • Tilt Steering Wheel • Dual Dash Fans • Power Windshield Solar / Privacy Shade 	<ul style="list-style-type: none"> • Manual Driver & Passenger Solar / Privacy Shade • Fire Extinguisher • Snack / Beverage Tray

AVAILABLE OPTIONS:	34 QFA	36 QSA	38 QBA
Power Cloth Driver & Passenger Seats	<input type="radio"/>	<input type="radio"/>	<input type="radio"/>
Power Halo Leather Driver & Passenger Seats	<input type="radio"/>	<input type="radio"/>	<input type="radio"/>
26" LCD Front Overhead TV	<input type="radio"/>	<input type="radio"/>	<input type="radio"/>

For more specifics on what makes a Tiffin Motorhome, go to tiffinmotorhomes.com



BRING YOUR SENSE OF
ADVENTURE. AND TASTE.



LIVING AREAS

The Allegro RED is designed to let you create a beautiful, inviting second home. Start with the look. The elegant interior schemes – Estate, Key Largo and Platinum – are neutral, letting you be the lead decorator. And while the Allegro RED is great for expressing yourself, it's also perfect for entertaining company. The living room is spacious, and the Scotchgard® treated fabrics and carpet (and an optional central vacuum cleaner system) make cleanup a cinch. A closed-off lavatory and separate shower quarters in the 36 QSA are perfect for ensuring everyone has complete privacy. And when it's finally time to retire, a queen-sized bed with an innerspring mattress awaits you.



ESTATE INTERIOR
MEDIUM ALDERWOOD CABINETS
Interior Decor Not Included

CHOOSE YOUR BEAUTIFUL.

Engineering makes a Tiffin reliable, but design is what makes it unique. From cabinets crafted in our own cabinet shop to the designer-chosen finishes, here's everything you need to make your Allegro RED your own. For a complete list of options and specifications, please visit tiffinmotorhomes.com

INTERIOR OPTIONS



Cherry Bark

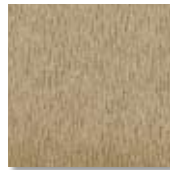
Medium Alderwood

Carpet

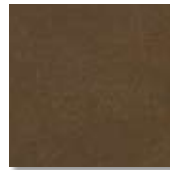
ESTATE



Bedroom/
Bedroom Accent



Sofa



Living Area Accent



Dinette

KEY LARGO



Bedroom/
Bedroom Accent



Sofa



Living Area Accent



Dinette

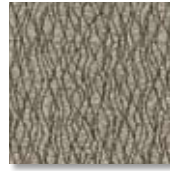
PLATINUM



Bedroom/
Bedroom Accent



Sofa



Living Area Accent



Dinette

Cabinet doors are made of solid wood, and all cabinet finishes are available in combination with any fabric scheme.

All options may not be available in every model.

Specifications and standard or optional equipment are subject to change without notice or obligation.

INTERIOR SPECIFICATIONS STANDARD EQUIPMENT FOR ALLEGRO RED 36 QSA AND 38 QBA:

LIVING AREA / DINETTE

- Booth Dinette with Large Pullout Storage Drawers
- Cloth DE Sofa Bed on Passenger's Side
- 32" LCD TV in Entertainment Center (36 QSA)
- 42" LCD TV in Entertainment Center (34 QFA & 38 QBA)
- Decorative Wall Hanging
- Cloth DE Sofa Bed on Driver's Side

AVAILABLE OPTIONS:	34 QFA	36 QSA	38 QBA
Freestanding Dinette with Cabinets	NA	○	○
Dinette with Computer Workstation	NA	○	○
Halo Leather DE Sofa Bed on Passenger's Side	○	○	○
Halo Leather DE Sofa Bed on Driver's Side	○	○	○
Cloth Flex-o Bed Sofa on Driver's Side	○	○	○
Halo Leather Flex-o Bed Sofa on Driver's Side	○	○	○
Home Theater Surround Sound System (Includes DVD Player)	○	○	○
DVD Player	○	○	○

KITCHEN

- Double Bowl Kitchen Sink with Single Lever Satin Nickel Pullout Faucet
- Solid Surface Countertop
- Solid Surface Backsplashes
- 3-burner Cooktop with Gas Oven
- Microwave with Exterior Venting
- 10 Cubic Foot 2-door Refrigerator
- Stacked Drawers Under Cooktop

AVAILABLE OPTIONS:	34 QFA	36 QSA	38 QBA
Convection/Microwave	○	○	○
Icemaker in 2-Door Refrigerator	○	○	○
4-door Refrigerator with Icemaker	○	○	○
Solid Wood Refrigerator Panels	○	○	○

BATH

- Medicine Cabinet
- Skylight in Shower
- Satin Nickel Vanity Faucet
- Fiberglass Molded Shower
- Solid Surface Vanity Top
- Fantastic® Fan

AVAILABLE OPTIONS:	34 QFA	36 QSA	38 QBA
Tub in Place of Shower	NA	NA	○

BEDROOM

- Wardrobe with Automatic Light
- Bed Comforter with Throw Pillows
- Innerspring Queen Mattress (60" X 80")
- Wall-to-wall Carpeting
- 26" LCD TV
- Solar / Privacy Shades

AVAILABLE OPTIONS:	34 QFA	36 QSA	38 QBA
Bunk Beds (30" X 72") with Bunk Ladder / Convertible Wardrobe	NA	NA	S
DVD Monitors in Bunk Beds	NA	NA	○
Tile Flooring in Bedroom	○	○	○

GENERAL INTERIOR

- Raised Panel Hardwood Cabinet Doors
- Soft Touch Vinyl Ceiling
- Medium Alderwood Solid Cabinet Doors & Drawer Fronts
- Solid Wood Cabinet Facias
- Wall-to-wall Vinyl Tile Flooring in Living Room, Kitchen & Bath
- Ball Bearing Drawer Slides
- Scotchgard® Treated Carpet & Fabrics
- Solar / Privacy RollEase® Shades
- Power Roof Vents
- Tank Level Monitor System
- Smoke Detector
- 10-gallon DSI Gas / Electric Water Heater
- Folding Step Well Cover
- Carbon Monoxide Detector
- LPG Leak Detector

AVAILABLE OPTIONS:	34 QFA	36 QSA	38 QBA
2000 Watt Inverter	○	○	○
Central Vacuum Cleaner	○	○	○
Combo Washer / Dryer	○	○	○
Stacked Washer / Dryer	○	○	○
Cherry Bark Solid Cabinet Doors & Drawer Fronts	○	○	○

FULL BODY PAINT COLORS



GOLD CORAL



MAROON CORAL



ROCKY MOUNTAIN BROWN

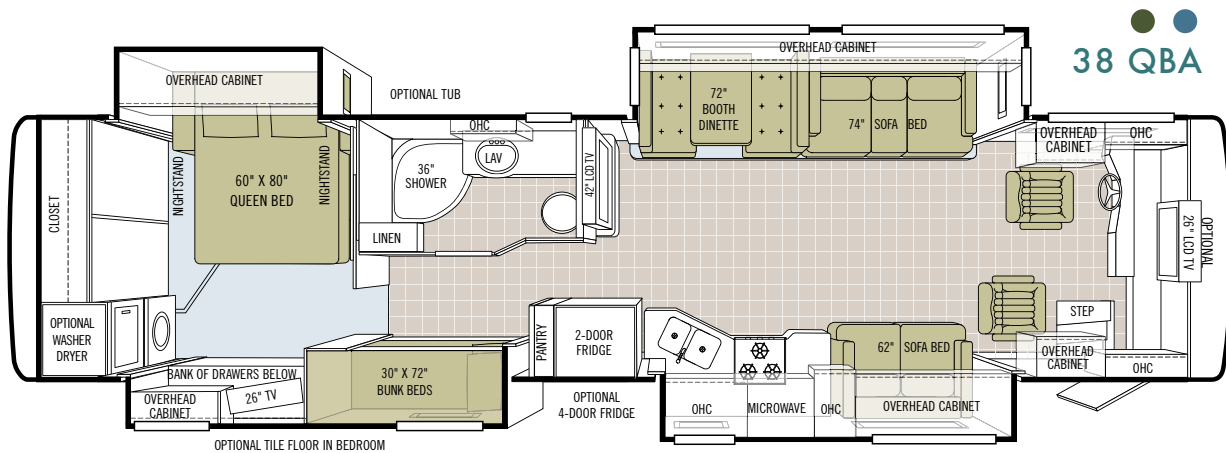
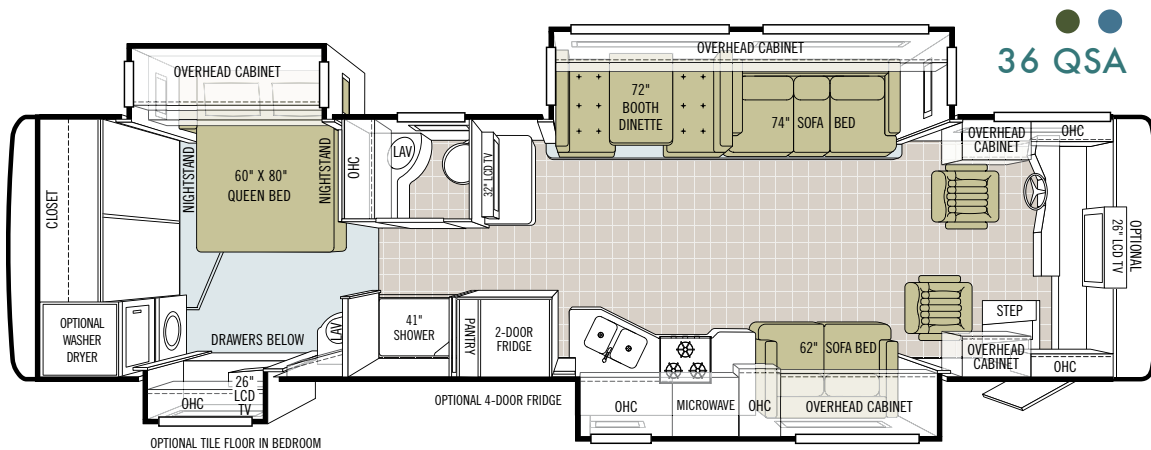
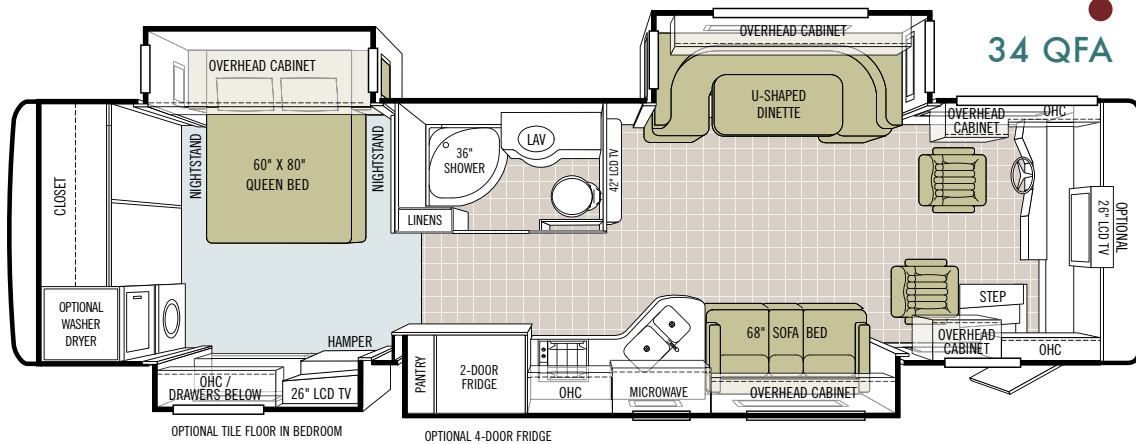
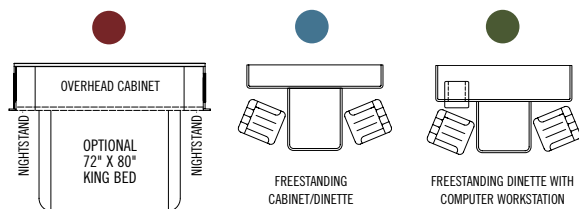


SILVER SAND



SUNLIT SAND

OPTION KEY



WHEREVER YOU GO, WE GO.

These days, that simple promise carries more weight than ever. In a time when some companies have struggled, a manufacturer who stands behind the product they build has never been more important. We've never been prouder of the strength of our company, our warranty and service plan (still the best in the motor home industry), and most importantly, the trust we've built with a very special group of motor home owners. We understand the richness that travel brings to your life, and our family is so proud of the relationship we have with yours. You are the reason we do what we do and why we never stop working to build a better Tiffin experience for you.

WARRANTIES THAT GO WHEREVER YOU GO.

10-YEAR LIMITED UNITIZED CONSTRUCTION WARRANTY – The structural integrity of the entire coach is guaranteed for the next 10 years. Warranty includes wall separation and inner frame weakness.

5-YEAR LIMITED LAMINATION WARRANTY – We guarantee against all exterior fiberglass delamination or wall separation.



Start your journey by visiting our website. We'd love to hear from you, so give us a call, send us a postcard or stop by our office the next time you pass by Red Bay. Because remember, wherever you go, we go.

Sincerely, 



TIFFIN MOTORHOMES

WHEREVER YOU GO, WE GO.

105 2nd Street NW, Red Bay, AL 35582
call 256.356.8661 fax 256.356.8219 or visit tiffinmotorhomes.com
FOR PARTS AND SERVICE CALL 256.356.0261

The following names are registered trademarks of Tiffin Motorhomes: Open Road®, Phaeton®, Allegro®, Allegro RED®, Allegro Bay®, Allegro Bus®, Zephyr®, Roughing It Smoothly®, and Pusher®.

DEALER