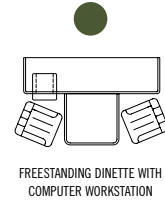
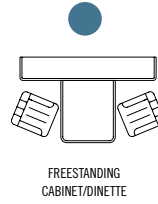
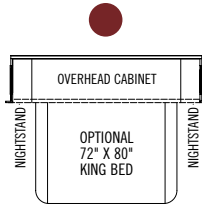
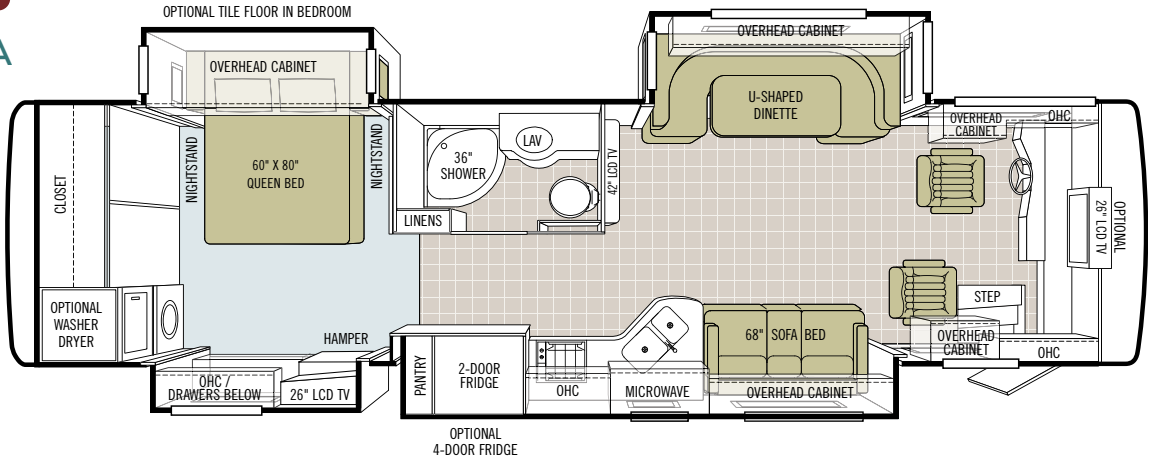


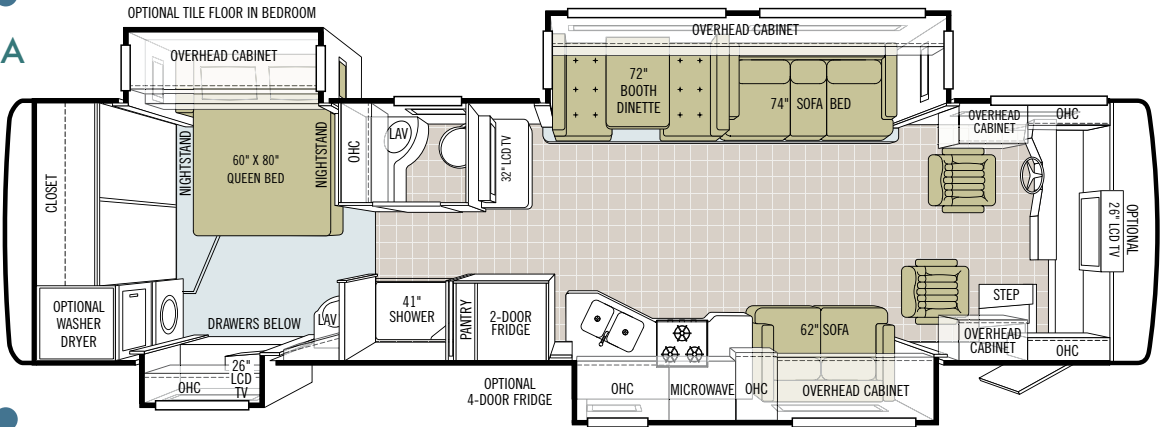
OPTION KEY



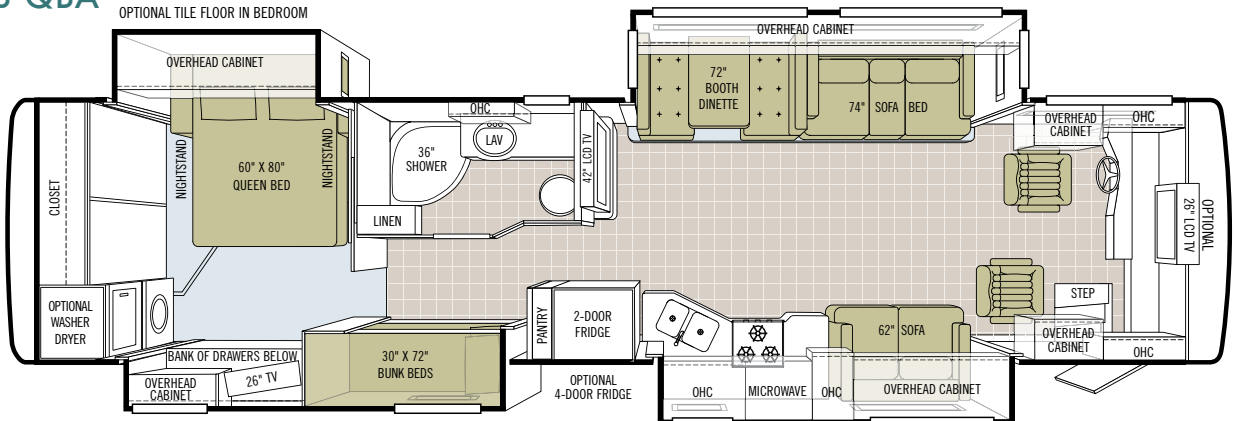
34 QFA



36 QSA



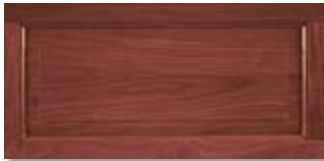
38 QBA



# CHOOSE YOUR BEAUTIFUL.

Engineering makes a Tiffin reliable, but design is what makes it unique. From cabinets crafted in our own cabinet shop to the designer-chosen finishes, here's everything you need to make your Allegro RED your own. For a complete list of options and specifications, please visit [tiffinmotorhomes.com](http://tiffinmotorhomes.com)

## INTERIOR OPTIONS



Cherry Bark



Medium Alderwood



Carpet

ESTATE



Bedroom/  
Bedroom Accent



Sofa

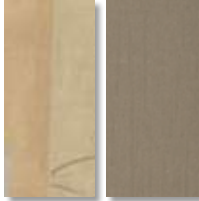


Living Area Accent



Dinette

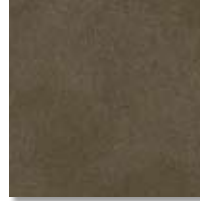
KEY LARGO



Bedroom/  
Bedroom Accent



Sofa

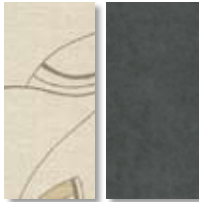


Living Area Accent



Dinette

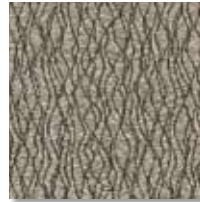
PLATINUM



Bedroom/  
Bedroom Accent



Sofa



Living Area Accent



Dinette

Cabinet doors are made of solid wood, and all cabinet finishes are available in combination with any fabric scheme.

All options may not be available in every model. Specifications and standard or optional equipment are subject to change without notice or obligation.

FULL BODY PAINT COLORS



GOLD CORAL



MAROON CORAL



ROCKY MOUNTAIN BROWN



SILVER SAND



SUNLIT SAND

TIFFIN MOTORHOMES, INC. 105 2ND STREET NW, RED BAY, AL 35582  
CALL 256.356.8661 FAX 256.356.8219  
FOR PARTS AND SERVICE CALL 256.356.0261

For more specifics on what makes a Tiffin Motorhome, go to [tiffinmotorhomes.com](http://tiffinmotorhomes.com)

TECHNICAL SPECIFICATIONS

AUTOMOTIVE

STANDARD EQUIPMENT FOR ALLEGRO RED 36 QSA AND 38 QBA:

- Raised Rail Chassis
- Air Ride Suspension
- Full Air Brakes
- Exhaust Brake

FREIGHTLINER REAR ENGINE DIESEL CHASSIS

Engine	Cummins ISB 6.7-Liter Electronic Diesel, Turbocharged, Aftercooled		
Peak HP	340 HP @ 2,600 rpm		
Peak Torque	660 @1,600 rpm		
Transmission	Allison 2500 MH 6-speed automatic with lock up		
GAWR - Front	12,000 Lb.		
GAWR - Rear	17,500 Lb.		
GVWR	29,500 Lb.		
GCWR	33,000 Lb.		
Wheel Base	208" (34 QFA)	228" (36 QSA)	252" (38 QBA)
Tire Size	275/80R22.5		
Fuel Tank (Gallons) - Dual Fuel fill	100		
Alternator Amps	160		
Trailer Hitch Capacity	5,000 Lb.		

OVERALL

Overall Length (Approximate)	34' 10" (34 QFA)	36' 9" (36 QSA)	38' 9" (38 QBA)	Fresh Water (Gallons)	90
Overall Height with Roof Air (Maximum)	12' 7"			Black Water (Gallons)	50
Interior Height	84"			Grey Water (Gallons)	70
Overall Width	101"			LPG Tank (Gallons; can only be filled to 80% capacity)	24
Interior Width	96"			Minimum Garage Height	13'
Basement Storage Cubic Feet (Approximate)	57 (34 QFA)	123 (36 QSA)	155 (38 QBA)		

STRUCTURAL

- Laminated Floor, Sidewall & Roof
- Steel / Aluminum Reinforced Structure
- One-piece Molded Fiberglass Roof Cap

EXTERIOR

- Fiberglass Front & Rear Caps
- Tinted One-piece Windshield
- 6.0 kw Onan® Diesel Generator
- Horizontal Mounted Wipers
- Heated Power Mirrors
- Exterior Patio Light
- Power Patio Awning
- Slide-out Awning(s)
- Chrome Wheel Liners
- Two 13,500 BTU High Profile Roof Air Conditioners
- Quiet A/C Roof-ducted System
- Double Electric Step
- 1/4" Thick Single Pane Windows
- Convenient Access Doors with Gas Shocks
- Ridged Long-life Storage Boxes
- Single Handle Lockable Storage Door Latches
- Heated Water & Holding Tank Compartments
- Four 6 V Auxiliary Batteries
- Park Telephone Ready
- Digital TV Antenna
- Cable Ready TV
- 50 Amp Service
- Black Holding Tank Flush System
- Exterior Rinse Hose / Shower
- Back-up Monitor
- 110 V Exterior Receptacle
- Undercoating
- Roof Ladder
- External Tripod Satellite Hook-up
- Exterior Storage Compartment Lights
- Side-view Cameras Activated by Turn Signals
- BASF Full Body Paint with Front Cap Protective Film
- Hydraulic Automatic Leveling Jacks

AVAILABLE OPTIONS:

	34 QFA	36 QSA	38 QBA
8.0 kw Onan® Generator	<input type="checkbox"/>	<input type="checkbox"/>	<input type="checkbox"/>
Automatic Satellite	<input type="checkbox"/>	<input type="checkbox"/>	<input type="checkbox"/>
Automatic Entry Door Awning	<input type="checkbox"/>	<input type="checkbox"/>	<input type="checkbox"/>
Hadley Air Horn	<input type="checkbox"/>	<input type="checkbox"/>	<input type="checkbox"/>
Two 15,000 BTU High Profile Roof Air Conditioners with Heat Pump (8.0 kw Generator Only)	<input type="checkbox"/>	<input type="checkbox"/>	<input type="checkbox"/>
CB Antenna	<input type="checkbox"/>	<input type="checkbox"/>	<input type="checkbox"/>

DRIVER'S COMPARTMENT

- Entry Floor Light
- Step Switch & 12 V Disconnect Switch
- Non-power Cloth Driver & Passenger Seats
- Lighted Instrument Panel
- Single CD Player & AM/FM Stereo
- 12 V Dash Receptacle
- Tilt Steering Wheel
- Dual Dash Fans
- Power Windshield Solar / Privacy Shade
- Manual Driver & Passenger Solar / Privacy Shades
- Fire Extinguisher
- Snack / Beverage Tray

AVAILABLE OPTIONS:

	34 QFA	36 QSA	38 QBA
Power Cloth Driver & Passenger Seats	<input type="checkbox"/>	<input type="checkbox"/>	<input type="checkbox"/>
Power Halo Leather Driver & Passenger Seats	<input type="checkbox"/>	<input type="checkbox"/>	<input type="checkbox"/>
26" LCD Front Overhead TV	<input type="checkbox"/>	<input type="checkbox"/>	<input type="checkbox"/>

**LIVING AREA / DINETTE**

- Booth Dinette with Large Pullout Storage Drawers
- Cloth DE Sofa Bed on Driver's Side
- 32" LCD TV in Entertainment Center (36 QSA)
- 42" LCD TV in Entertainment Center (34 QFA & 38 QBA)
- Decorative Wall Hanging
- Cloth DE Sofa Bed on Passenger's Side

AVAILABLE OPTIONS:	34 QFA	36 QSA	38 QBA
Freestanding Dinette with Cabinets	NA	○	○
Dinette with Computer Workstation	NA	○	○
DVD Player	○	○	○
Home Theater Surround Sound System (Includes DVD Player)	○	○	○
Halo Leather DE Sofa Bed on Passenger's Side	○	○	○
Cloth Flex-O Bed Sofa on Driver's Side	○	○	○
Halo Leather DE Sofa Bed on Driver's Side	○	○	○
Halo Leather Flex-O Bed Sofa on Driver's Side	○	○	○

**KITCHEN**

- Double Bowl Kitchen Sink with Single Lever Satin Nickel Pullout Faucet
- Solid Surface Countertop
- Solid Surface Backsplashes
- 3-burner Cooktop with Gas Oven
- Microwave with Exterior Venting
- 10 Cubic Foot 2-door Refrigerator
- Stacked Drawers Under Cooktop

AVAILABLE OPTIONS:	34 QFA	36 QSA	38 QBA
Convection / Microwave	○	○	○
Icemaker in 2-door Refrigerator	○	○	○
4-door Refrigerator with Icemaker	○	○	○
Solid Wood Refrigerator Panels	○	○	○

**BATH**

- Medicine Cabinet
- Skylight in Shower
- Satin Nickel Vanity Faucet
- Fiberglass Molded Shower
- Solid Surface Vanity Top
- Fantastic® Fan

AVAILABLE OPTIONS:	34 QFA	36 QSA	38 QBA
Tub in Place of Shower	NA	NA	○

**BEDROOM**

- Wardrobe with Automatic Light
- Bed Comforter with Throw Pillows
- Innerspring Queen Mattress (60" X 80")
- Wall-to-wall Carpeting
- 26" LCD TV
- Solar / Privacy Shades

AVAILABLE OPTIONS:	34 QFA	36 QSA	38 QBA
Bunk Beds (30" X 72") with Bunk Ladder / Convertible Wardrobe	NA	NA	S
DVD Monitors in Bunk Beds	NA	NA	○
Tile Flooring in Bedroom	○	○	○

**GENERAL INTERIOR**

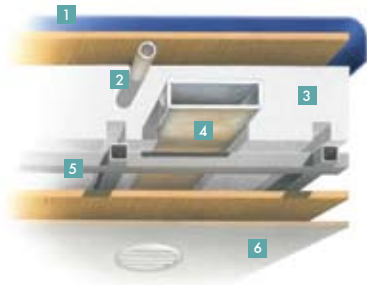
- Raised Panel Hardwood Cabinet Doors
- Soft Touch Vinyl Ceiling
- Solid Wood Cabinet Fascias
- Medium Alderwood Solid Cabinet Doors & Drawer Fronts
- Wall-to-wall Vinyl Tile Flooring in Living Room, Kitchen & Bath
- Ball Bearing Drawer Slides
- Scotchgard® Treated Carpet & Fabrics
- Solar / Privacy RollEase® Shades
- Power Roof Vents
- Tank Level Monitor System
- Smoke Detector
- 10-gallon DSI Gas / Electric Water Heater
- Folding Step Well Cover
- Carbon Monoxide Detector
- LPG Leak Detector

AVAILABLE OPTIONS:	34 QFA	36 QSA	38 QBA
2000 Watt Inverter	○	○	○
Central Vacuum Cleaner	○	○	○
Combo Washer / Dryer	○	○	○
Stacked Washer / Dryer	○	○	○
Cherry Bark Solid Cabinet Doors & Drawer Fronts	○	○	○

# ACTUALLY, YOU CAN ENGINEER HAPPINESS.

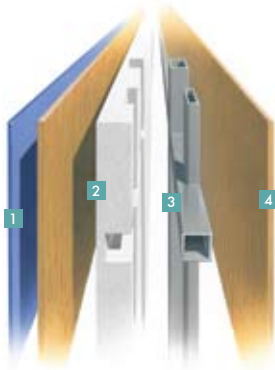
At Tiffin, our engineers employ innovative construction techniques, like the unique drainage system in the roof to channel A/C condensation. And we use high-quality components, such as laminated sidewalls and floors to provide ultimate durability and sturdiness on the road. This ensures that our owners enjoy lasting value, year after year. For a complete list of specifications and options, please visit [tiffinmotorhomes.com](http://tiffinmotorhomes.com)

## CONSTRUCTION SPECIFICATIONS



### ROOF

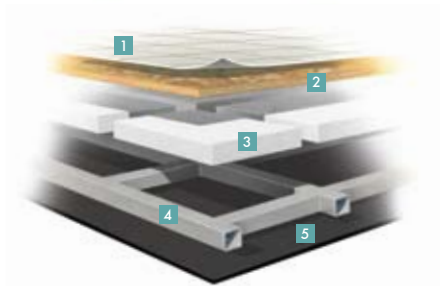
1. One-piece, moisture resistant molded fiberglass roof cap provides insulation and strength and prevents water intrusion
2. A/C Condensation Drainage System that runs internally through the roof insulation and down the sidewalls, redirecting water underneath the motor home
3. 5½" formed insulation
4. Quiet Air Cooling System with return air and foil-wrapped cooling exhaust ducts
5. Durable, tubular aluminum roof skeleton
6. Easy-to-clean soft touch vinyl ceiling panel



### SIDEWALL

1. Gel-coat fiberglass outside wall panel
2. High-performance thermal insulation
3. Durable, yet lightweight, tubular aluminum wall skeleton
4. Decorative inside wall panel

All sidewalls are approximately 2" thick.



### FLOOR

1. Vinyl tile floor bonded to high-impact oriented strand board
2. High-level engineered oriented strand board
3. High-performance thermal insulation
4. Durable, tubular steel floor skeleton
5. Woven moisture barrier material

TIFFIN MOTORHOMES, INC. 105 2ND STREET NW, RED BAY, AL 35582  
CALL 256.356.8661 FAX 256.356.8219  
FOR PARTS AND SERVICE CALL 256.356.0261

For more specifics on what makes a Tiffin Motorhome, go to [tiffinmotorhomes.com](http://tiffinmotorhomes.com)

The following names are registered trademarks of Tiffin Motorhomes: Open Road®, Phaeton®, Allegro®, Allegro®RED, Allegro Bay®, Allegro Bus®, Zephyr®, Roughing It Smoothly®, and Pusher®.