

**NEW** 3/4" FITTINGS  
See pages 4-7



2004 Catalog  
Quick Connect Fittings, Manifolds, & Valves



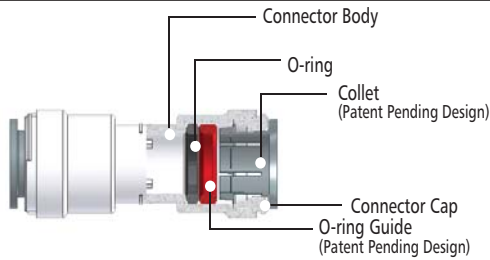
# Quick Connect

Sea Tech, Inc. was established in 1995 and provides reliable, high quality, cost effective connection solutions. Sea Tech, Inc. offers a wide range of standard and unique custom fittings, valves, manifolds, and tubing designed to address specific customer requirements. Sea Tech, Inc. designs, manufactures, and markets its products worldwide from a 45,000 sq.ft facility in Wilmington, NC and through authorized stocking distributors. Sea Tech, Inc. maintains a continual R&D program to constantly upgrade the product ensuring the most reliable, cost effective solution, for your connection needs. It is Sea Tech's mission to provide customers the best product available, with on-time delivery, at the best possible price.

## TECHNICAL INFORMATION

### MATERIAL SPECIFICATIONS

SERIES	MATERIAL	COLOR	O-RING
35 Series	High Performance Thermal Plastic	Off White	EPDM
24 Series	Thermal Plastic	Bright White	EPDM
Metric Series	Thermal Plastic	Black	EPDM



### FITTING PERFORMANCE RATINGS

35 Series	100psi@180°F 6.8bar@82°C	250psi@75°F 17.25bar@24°C
24 Series	100psi@140°F 6.8bar@60°C	250psi@75°F 17.25bar@24°C
Metric Series	100psi@140°F 6.8bar@60°C	250psi@75°F 17.25bar@24°C

### THREAD TORQUE VALUES

Size	1/2"	3/4"
Torque Value	Min. 17.7 in-lbs	Min. 22.7 in-lbs
	Max. 26.5 in-lbs	Max. 31 in-lbs

### TUBING TOLERANCES

Tolerance	+0.004" ~ 0.004" O.D. +.010mm ~ -.010mm O.D.
-----------	---

**FDA FDA approval:**  
SeaTech fittings are produced from FDA approved materials.

**NSF ANSI/NSF-61 Certifications:**  
SeaTech 35 Series, 24 Series, and Metric Series products are tested, certified, and approved for contact with drinking water.

**NSF ANSI/NSF-14 Certifications:**  
SeaTech 35 Series products are tested, certified, and approved to NSF-14 standards.

**CSA B137.5 Certifications:**  
Sea Tech 35 Series products are tested, certified, and approved to Canadian standard CSA B137.5.

**ASTM F877 Certifications:**  
Sea Tech 35 Series products are tested, certified, and approved to ASTM F877 performance standards.

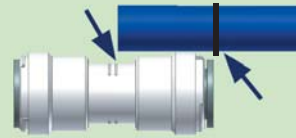
**NSF NSF-U.P. Code Certifications:**  
Sea Tech 35 Series products are tested, certified, and approved and meet the requirements of the Uniform Plumbing Code..

**ISO 9001 Certification:**  
SeaTech fittings are produced under the ISO 9001 system.

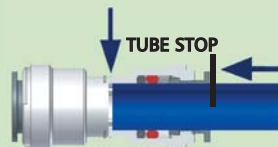
## MAKING A CONNECTION



Cut the tubing to length using the Sea Tech tubing cutter or similar. Inspect the outside diameter of the tubing. It must be free of damage, smooth, and clean.



Measure the insertion depth on the tubing end. SeaTech connectors have a insertion depth line molded onto the outside of the connector bodies.



Make certain to push the tubing completely into the connector until it comes into contact with the internal tubing stop.

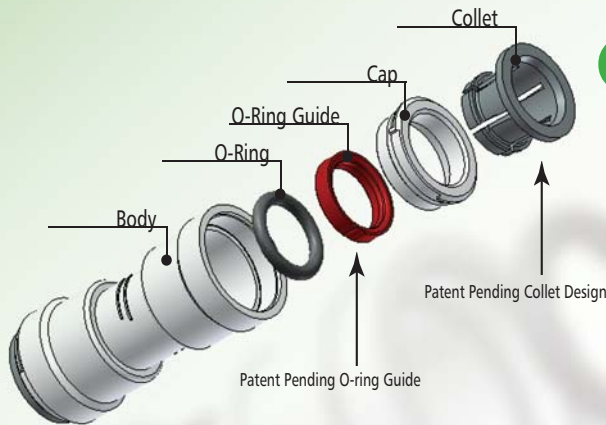


To disconnect ensure the system is depressurized before removing connectors. Push the collet in squarely against the face of the fitting. With the collet held in this position, the tubing can be removed. The connectors can then be re-used.

Sea Tech fittings are designed for low pressure fluids. For other applications please refer to our Customer Service Department. Tubing should be supported at minimum of 36" to prevent excessive load to the connectors. Do not install tubing supports closer than 3 inches from the connector ends. We strongly recommend that new installations be thoroughly tested prior to use. Do not use with explosive gases, petroleum products, or other fuels.



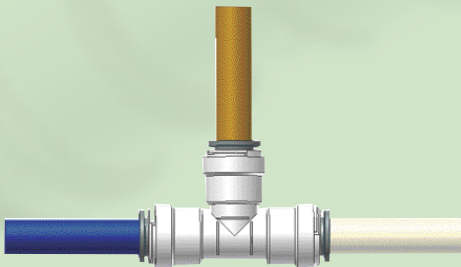
200 Willard Street  
Wilmington, NC 28401  
1.888.500.0056  
Fax 910.763.4684  
www.seatechinc.com



## O-RING GUIDE IS THE KEY!

All Sea Tech connectors incorporate an exclusive O-ring Guide for improved reliability. This unique feature insures zero-leak connections by:

- Protecting the O-ring from damage during connection
- Increasing the connectors side load capacity
- Correctly aligning the tubing with the O-ring every time.
- Prevents the O-ring from becoming dislodged.



### Connect to Multiple Materials!

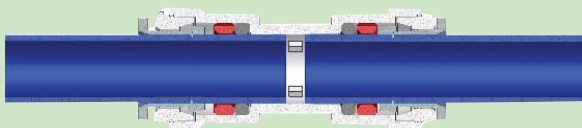
The Sea Tech fittings incorporates Stainless Steel Gripping Teeth in its Collet. These corrosion resistant teeth allow SeaTech connectors to interconnect with multiple materials without the need for special tools, or tube inserts.

- Copper
- CPVC
- PEX, LDPE, MDPE, & HDPE Tubings



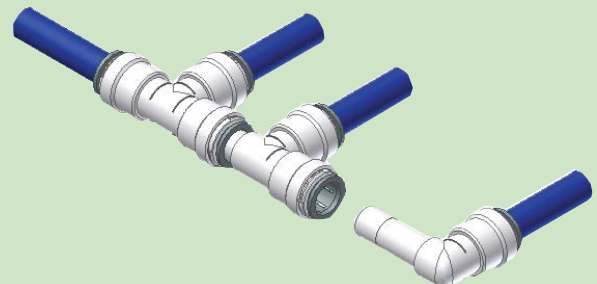
### Rotates under pressure!

After a joint is made the tubing can still swivel while connected, even under maximum pressure. The ability to rotate under pressure makes these connectors ideal for vibrating and dynamic applications.



### Highest Flow!

Sea Tech connectors join the tubing on the outside. Because there is no barb fitting on the inside of the tubing the flow capacity is increased by more than 30%. Only SeaTech connectors offer complete flow, allowing for a more efficient system.



### Create mini-manifolds!

With Sea Tech fittings small lengths of tubing can be eliminated by using our stackable connector configurations. Simply snap together Tees and or Elbows to create a mini-manifold of fittings. Because SeaTech connectors rotate the direction of the tubing can be oriented by a simple twist, reducing the amount of tubing required to plumb a water system.

# 35 Series



Sea Tech's tubing is produced from a high performance, cross-linked polyethylene material. Sea Tech Tubing is formulated and manufactured in 1/2" CTS (5/8" O.D.) and 3/4" CTS (7/8" O.D.) size. Sea Tech Tubing is NSF listed, FDA recognized, and available in multiple colors for ease of water line identification.

### TUBING PERFORMANCE RATING

Operating Pressure: Vacuum to 160psi  
 Max Temperature: 180°F @ 100psi  
 72°F @ 160psi



<b>CUTTER</b>	<b>PART NO.</b>
	<b>1158-1522</b>
<b>REPLACEMENT BLADE</b>	<b>PART NO.</b>
	<b>1159-1522</b>

50' Coils are packaged in a dispensing box.



Sea Tech connectors utilize a swivel nut with NPS straight threads and a cone seal. This allows the installer to thread onto NPT, NPS, BSP, and most threads without tools or thread sealant. Simply thread on, hand tight, for a zero leak seal.

Cone Seal



PART NO.	TUBE SIZE	COLOR	PACKAGE
B5805	1/2" CTS	BLUE	5' STRAIGHT LENGTH
B5810	1/2" CTS	BLUE	10' STRAIGHT LENGTH
B5820	1/2" CTS	BLUE	20' STRAIGHT LENGTH
00B5850	1/2" CTS	BLUE	50' COIL, BOX
B58250	1/2" CTS	BLUE	250' COIL
R5805	1/2" CTS	RED	5' STRAIGHT LENGTH
R5810	1/2" CTS	RED	10' STRAIGHT LENGTH
R5820	1/2" CTS	RED	20' STRAIGHT LENGTH
00R5850	1/2" CTS	RED	50' COIL, BOX
R58250	1/2" CTS	RED	250' COIL
W5805	1/2" CTS	WHITE	5' STRAIGHT LENGTH
W5810	1/2" CTS	WHITE	10' STRAIGHT LENGTH
W5820	1/2" CTS	WHITE	20' STRAIGHT LENGTH
00W5850	1/2" CTS	WHITE	50' COIL, BOX
W58250	1/2" CTS	WHITE	250' COIL
B7805	<b>NEW</b> 3/4" CTS	BLUE	5' STRAIGHT LENGTH
B7810	<b>NEW</b> 3/4" CTS	BLUE	10' STRAIGHT LENGTH
B7820	<b>NEW</b> 3/4" CTS	BLUE	20' STRAIGHT LENGTH
B7850	<b>NEW</b> 3/4" CTS	BLUE	50' COIL
B78250	<b>NEW</b> 3/4" CTS	BLUE	250' COIL
R7805	<b>NEW</b> 3/4" CTS	RED	5' STRAIGHT LENGTH
R7810	<b>NEW</b> 3/4" CTS	RED	10' STRAIGHT LENGTH
R7820	<b>NEW</b> 3/4" CTS	RED	20' STRAIGHT LENGTH
R7850	<b>NEW</b> 3/4" CTS	RED	50' COIL
R78250	<b>NEW</b> 3/4" CTS	RED	250' COIL
W7805	<b>NEW</b> 3/4" CTS	WHITE	5' STRAIGHT LENGTH
W7810	<b>NEW</b> 3/4" CTS	WHITE	10' STRAIGHT LENGTH
W7820	<b>NEW</b> 3/4" CTS	WHITE	20' STRAIGHT LENGTH
W7850	<b>NEW</b> 3/4" CTS	WHITE	50' COIL
W78250	<b>NEW</b> 3/4" CTS	WHITE	250' COIL

Sea Tech 35 Series products are designed and manufactured to be trouble free for many years of service life. 35 Series products are designed and manufactured in Polysulfone, a high performance thermal plastic material. All 35 Series products are approved and certified to NSF-61, NSF-14, CSA B137.5, ASTM F877, and to the Uniform Plumbing Code (U.P. Code). 35 Series products are available in standard imperial inch sizes and interconnect with all Sea Tech 24 Series fittings. The Sea Tech quick connect design allows for quick and easy connections without installation tools. Simply cut the Plastic, Copper, or CPVC piping and snap a Sea Tech fitting in place for a zero leak connection.

### FITTINGS PERFORMANCE RATING:

Operating Pressure: Vacuum to 250psi  
 Max Temperature: 180°F @ 100psi / 75°F @ 250psi

## UNION TEE



**NEW SIZE**

PART NO.	TUBE SIZE	PACKAGE
3523-10	1/2"CTS	BULK
003523-10	1/2"CTS	CLAM
3523-14	3/4"CTS	BULK
003523-14	3/4"CTS	CLAM

## STACKABLE TEE



**NEW SIZE**

PART NO.	TUBE SIZE	PACKAGE
3533-10	1/2"CTS	BULK
003533-10	1/2"CTS	CLAM
3533-14	3/4"CTS	BULK
003533-14	3/4"CTS	CLAM

## STACKABLE BRANCH TEE



**NEW**

PART NO.	TUBE SIZE	PACKAGE
3534-10	1/2"CTS	BULK
003534-10	1/2"CTS	CLAM

## REDUCING STACKABLE TEE



PART NO.	TUBE SIZE	TUBE SIZE	PACKAGE
3533-1004	1/2" CTS	1/4" O.D.	BULK
003533-1004	1/2" CTS	1/4" O.D.	CLAM

## MALE THREAD TEE



PART NO.	TUBE SIZE	THREAD SIZE	PACKAGE
3530-1008	1/2" CTS	1/2" NPT	BULK
003530-1008	1/2" CTS	1/2" NPT	CLAM

## REDUCING TEE



**NEW SIZE**

PART NO.	TUBE SIZE	TUBE SIZE	PACKAGE
3524-1004	1/2" CTS	1/4" O.D.	BULK
003524-1004	1/2" CTS	1/4" O.D.	CLAM
3524-1410	3/4" CTS	1/2" CTS	BULK
003524-1410	3/4" CTS	1/2" CTS	CLAM

## UNION ELBOW



**NEW SIZE**

PART NO.	TUBE SIZE	PACKAGE
3517-10	1/2"CTS	BULK
003517-10	1/2"CTS	CLAM
3517-14	3/4"CTS	BULK
003517-14	3/4"CTS	CLAM

## STACKABLE ELBOW



**NEW SIZE**

PART NO.	TUBE SIZE	PACKAGE
3518-10	1/2" CTS	BULK
003518-10	1/2" CTS	CLAM
3518-14	3/4" CTS	BULK
003518-14	3/4" CTS	CLAM

## DROP EAR ELBOW



**NEW**

PART NO.	TUBE SIZE	THREAD	PACKAGE
3521-1008	1/2"CTS	1/2"NPT	BULK
003521-1008	1/2"CTS	1/2"NPT	CLAM

## UNION CONNECTOR



**NEW SIZE**

PART NO.	TUBE SIZE	PACKAGE
3515-10	1/2"CTS	BULK
003515-10	1/2"CTS	CLAM
3515-14	3/4"CTS	BULK
003515-14	3/4"CTS	CLAM

# 35 Series

## REDUCING UNION



PART NO.	TUBE SIZE	TUBE SIZE	PACKAGE
3516-1004	1/2" CTS	1/4" O.D.	BULK
003516-1004	1/2" CTS	1/4" O.D.	CLAM

## FEMALE CONNECTOR



**NEW SIZE**

PART NO.	TUBE SIZE	THREAD SIZE	PACKAGE
3510-1008	1/2" CTS	1/2"NPS	BULK
003510-1008	1/2" CTS	1/2"NPS	CLAM
3510-1012	1/2" CTS	3/4"NPS	BULK
003510-1012	1/2" CTS	3/4"NPS	CLAM
3510-1013	1/2" CTS	3/4"CLOSET	BULK
003510-1013	1/2" CTS	3/4"CLOSET	CLAM
3510-1014	1/2" CTS	3/4"FGHT	BULK
003510-1014	1/2" CTS	3/4"FGHT	CLAM
3510-1412	3/4" CTS	3/4"NPS	BULK
003510-1412	3/4" CTS	3/4"NPS	CLAM

## FEMALE SWIVEL ELBOW



PART NO.	TUBE SIZE	THREAD SIZE	PACKAGE
3520-1008	1/2" CTS	1/2"NPS	BULK
003520-1008	1/2" CTS	1/2"NPS	CLAM
3520-1012	1/2" CTS	3/4"NPS	BULK
003520-1012	1/2" CTS	3/4"NPS	CLAM
3520-1013	1/2" CTS	3/4"CLOSET	BULK
003520-1013	1/2" CTS	3/4"CLOSET	CLAM
3520-1014	1/2" CTS	3/4"FGHT	BULK
003520-1014	1/2" CTS	3/4"FGHT	CLAM

## REDUCING STEM



**NEW**

PART NO.	STEM SIZE	TUBE SIZE	PACKAGE
3514-1410	3/4" CTS	1/2" CTS	BULK
003514-1410	3/4" CTS	1/2" CTS	CLAM

## MALE ELBOW



PART NO.	TUBE SIZE	THREAD SIZE	PACKAGE
3519-1008	1/2" CTS	1/2"NPT	BULK
003519-1008	1/2" CTS	1/2"NPT	CLAM

## MALE CONNECTOR



**NEW SIZE**

PART NO.	TUBE SIZE	THREAD SIZE	PACKAGE
3501-1008	1/2" CTS	1/2"NPT	BULK
003501-1008	1/2" CTS	1/2"NPT	CLAM
3501-1012	1/2" CTS	3/4"NPT	BULK
003501-1012	1/2" CTS	3/4"NPT	CLAM
3501-1014	1/2" CTS	3/4"MGHT	BULK
003501-1014	1/2" CTS	3/4"MGHT	CLAM
3501-1412	3/4" CTS	3/4"NPT	BULK
003501-1412	3/4" CTS	3/4"NPT	CLAM

## UNION PUMP FITTING



PART NO.	TUBE SIZE	PACKAGE
3575-10	1/2" CTS	BULK
003575-10	1/2" CTS	CLAM

## ELBOW PUMP FITTING



PART NO.	TUBE SIZE	PACKAGE
3576-10	1/2" CTS	BULK
003576-10	1/2" CTS	CLAM

## HOSE BARB FITTING



PART NO.	TUBE SIZE	BARB SIZE	PACKAGE
3513-1008	1/2" CTS	1/2" H.B.	BULK
003513-1008	1/2" CTS	1/2" H.B.	CLAM

## STACKABLE HOSE BARB UNION



PART NO.	TUBE SIZE	BARB SIZE	PACKAGE
3511-1008	1/2" CTS	1/2" H.B.	BULK
003511-1008	1/2" CTS	1/2" H.B.	CLAM

## STACKABLE HOSE BARB ELBOW



PART NO.	TUBE SIZE	BARB SIZE	PACKAGE
3512-1008	1/2" CTS	1/2" H.B.	BULK
003512-1008	1/2" CTS	1/2" H.B.	CLAM

## END STOP



PART NO.	TUBE SIZE	PACKAGE
3545-10	1/2" CTS	BULK
003545-10	1/2" CTS	CLAM

## STOP VALVE



PART NO.	TUBE SIZE	PACKAGE
3539-10	1/2" CTS	BULK
003539-10	1/2" CTS	CLAM

## REDUCING STOP VALVE



PART NO.	TUBE SIZE	TUBE SIZE	PACKAGE
3539-1004	1/2" CTS	1/4" O.D.	BULK
003539-1004	1/2" CTS	1/4" O.D.	CLAM

## STACKABLE VALVE



PART NO.	TUBE SIZE	PACKAGE
3543-10	1/2" CTS	BULK
003543-10	1/2" CTS	CLAM

## REDUCING STACKABLE VALVE



PART NO.	STEM SIZE	TUBE SIZE	PACKAGE
3543-1004	1/2" CTS	1/4" O.D.	BULK
003543-1004	1/2" CTS	1/4" O.D.	CLAM

## 3 WAY SELECTOR VALVE



PART NO.	TUBE SIZE	PACKAGE
3538-10	1/2" CTS	BULK
003538-10	1/2" CTS	CLAM

## 3 WAY BY-PASS VALVE



PART NO.	TUBE SIZE	PACKAGE
3541-10	1/2" CTS	BULK
003541-10	1/2" CTS	CLAM

## UNION CHECK VALVE



PART NO.	TUBE SIZE	PACKAGE
3540-10	1/2" CTS	BULK
003540-10	1/2" CTS	CLAM

## PIPE CLIP



PART NO.	TUBE SIZE	PACKAGE
2370-1557	1/2" CTS	BULK
002370-1557	1/2" CTS	CLAM

## ELBOW CLIP



PART NO.	TUBE SIZE	PACKAGE
2349-15	1/2" CTS	BULK

## COLLET CLIP



PART NO.	TUBE SIZE	PACKAGE
3547-10	1/2" CTS	BULK
003547-10	1/2" CTS	CLAM

## O-RING ASSEMBLY



PART NO.	TUBE SIZE	PACKAGE
159-35	1/2" CTS	BULK

## CONE SEAL



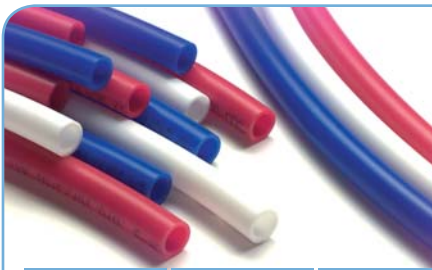
PART NO.	TUBE SIZE	PACKAGE
161-08	1/2" NPS	BULK
161-12	3/4" NPS & FGHT	BULK

## POLY TUBING



PART NO.	TUBE SIZE	PACKAGE
50256	1/4" O.D.	100' COIL

# 24 Series



Sea Tech's tubing is produced from a high performance, cross-linked polyethylene material. Sea Tech Tubing is formulated and manufactured in 1/2" CTS (5/8" O.D.) size. Sea Tech Tubing is NSF listed, FDA recognized, and available in multiple colors for ease of water line identification.

PART NO.	TUBE SIZE	COLOR	PACKAGE
B5805	1/2" CTS	BLUE	5' STRAIGHT LENGTH
B5810	1/2" CTS	BLUE	10' STRAIGHT LENGTH
B5820	1/2" CTS	BLUE	20' STRAIGHT LENGTH
00B5850	1/2" CTS	BLUE	50' COIL, BOX
B58250	1/2" CTS	BLUE	250' COIL
R5805	1/2" CTS	RED	5' STRAIGHT LENGTH
R5810	1/2" CTS	RED	10' STRAIGHT LENGTH
R5820	1/2" CTS	RED	20' STRAIGHT LENGTH
00R5850	1/2" CTS	RED	50' COIL, BOX
R58250	1/2" CTS	RED	250' COIL
W5805	1/2" CTS	WHITE	5' STRAIGHT LENGTH
W5810	1/2" CTS	WHITE	10' STRAIGHT LENGTH
W5820	1/2" CTS	WHITE	20' STRAIGHT LENGTH
00W5850	1/2" CTS	WHITE	50' COIL, BOX
W58250	1/2" CTS	WHITE	250' COIL

### TUBING PERFORMANCE RATING:

Operating Pressure: Vacuum to 160psi  
 Max Temperature: 180°F @ 100psi  
 72°F @ 160psi



50' Coils are packaged in a dispensing box.

### CUTTER

PART NO. 1158-1522

### REPLACEMENT BLADE

PART NO. 1159-1522



Sea Tech connectors utilize a swivel nut with NPS straight threads and a cone seal. This allows the installer to thread onto NPT, NPS, BSP, and most threads without tools or thread sealant. Simply thread on, hand tight, for a zero leak seal.

Cone Seal

### STOP VALVE



PART NO.	TUBE SIZE	PACKAGE
2439-10	1/2" CTS	BULK
002439-10	1/2" CTS	CLAM

### UNION TEE



PART NO.	TUBE SIZE	PACKAGE
2423-10	1/2" CTS	BULK
002423-10	1/2" CTS	CLAM

### STACKABLE TEE



PART NO.	TUBE SIZE	PACKAGE
2433-10	1/2" CTS	BULK
002433-10	1/2" CTS	CLAM

Sea Tech 24 Series quick connect products are produced from FDA approved materials, certified and approved to NSF-61 standards and are suitable for contact with drinking water. 24 Series products are designed and manufactured in a bright white thermal plastic and are applicable for many applications such as Water Plumbing, Car Wash, Water Filtration, Aquariums, and many others. 24 Series fittings are produced in standard imperial inch sizes and interconnect with all Sea Tech 35 Series connections. Sea Tech 24 Series fittings directly connect to a variety of plastic, copper, and CPVC piping. Simply cut the piping and snap a Sea Tech quick connect fitting in place for a leak free connection.



### FITTING PERFORMANCE RATING:

Operating Pressure: Vacuum 250psi  
 Max Temperature: 140°F @ 100psi / 75°F @ 250psi



## UNION ELBOW



PART NO.	TUBE SIZE	PACKAGE
2417-10	1/2" CTS	BULK
002417-10	1/2" CTS	CLAM

## STACKABLE ELBOW



PART NO.	TUBE SIZE	PACKAGE
2418-10	1/2" CTS	BULK
002418-10	1/2" CTS	CLAM

## REDUCING UNION



PART NO.	TUBE SIZE	TUBE SIZE	PACKAGE
2416-1008	1/2" CTS	3/8" CTS	BULK
002416-1008	1/2" CTS	3/8" CTS	CLAM

## FEMALE SWIVEL CONNECTOR



PART NO.	TUBE SIZE	THREAD SIZE	PACKAGE
2410-1008	1/2" CTS	1/2" NPS	BULK
002410-1008	1/2" CTS	1/2" NPS	CLAM
2410-1012	1/2" CTS	3/4" NPS	BULK
002410-1012	1/2" CTS	3/4" NPS	CLAM
2410-1013	1/2" CTS	3/4" CLOSET	BULK
002410-1013	1/2" CTS	3/4" CLOSET	CLAM
2410-1014	1/2" CTS	3/4" FGHT	BULK
002410-1014	1/2" CTS	3/4" FGHT	CLAM

## MALE ELBOW



PART NO.	TUBE SIZE	THREAD SIZE	PACKAGE
2419-1008	1/2" CTS	1/2" NPT	BULK
002419-1008	1/2" CTS	1/2" NPT	CLAM

## CONE SEAL



PART NO.	TUBE SIZE	PACKAGE
161-08	1/2" NPS	BULK
161-12	3/4" NPS & FGHT	BULK

## ELBOW CLIP



PART NO.	TUBE SIZE	PACKAGE
2349-15	1/2" CTS	BULK

## UNION CONNECTOR



PART NO.	TUBE SIZE	PACKAGE
2415-10	1/2" CTS	BULK
002415-10	1/2" CTS	CLAM

## REDUCING STEM



PART NO.	STEM SIZE	TUBE SIZE	PACKAGE
2414-1004	1/2" CTS	1/4" O.D.	BULK
002414-1004	1/2" CTS	1/4" O.D.	CLAM
2414-1008	1/2" CTS	3/8" CTS	BULK
002414-1008	1/2" CTS	3/8" CTS	CLAM

## FEMALE SWIVEL ELBOW



PART NO.	TUBE SIZE	THREAD SIZE	PACKAGE
2420-1008	1/2" CTS	1/2" NPS	BULK
002420-1008	1/2" CTS	1/2" NPS	CLAM
2420-1012	1/2" CTS	3/4" NPS	BULK
002420-1012	1/2" CTS	3/4" NPS	CLAM
2420-1013	1/2" CTS	3/4" CLOSET	BULK
002420-1013	1/2" CTS	3/4" CLOSET	CLAM
2420-1014	1/2" CTS	3/4" FGHT	BULK
002420-1014	1/2" CTS	3/4" FGHT	CLAM

## MALE CONNECTOR



PART NO.	TUBE SIZE	THREAD SIZE	PACKAGE
2401-1008	1/2" CTS	1/2" NPT	BULK
002401-1008	1/2" CTS	1/2" NPT	CLAM

## END STOP



PART NO.	TUBE SIZE	PACKAGE
2445-10	1/2" CTS	BULK
002445-10	1/2" CTS	CLAM

## PIPE CLIP



PART NO.	TUBE SIZE	PACKAGE
2370-1557	1/2" CTS	BULK
002370-1557	1/2" CTS	CLAM

## O-RING ASSEMBLY



PART NO.	TUBE SIZE	PACKAGE
159-24	1/2" CTS	BULK

## POLY TUBING



PART NO.	TUBE SIZE	PACKAGE
50256	1/4" O.D.	100' COIL

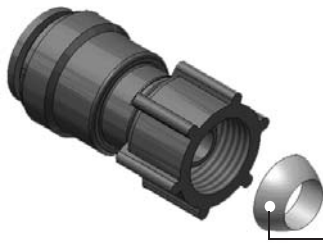
# Metric Series



Sea Tech Metric Series products are available in sizes from 15mm to 28mm. Sea Tech offers quick connect fittings, valves, modular manifolds, and tubing in this world class product offering. Sea Tech's Metric Series range is manufactured in several high performance materials that are FDA approved and NSF-61 certified for contact with drinking water.

**FITTINGS PERFORMANCE RATING:**

Operating Pressure: Vacuum to 250psi  
Max Temperature: 140°F @ 100psi / 75°F @ 250psi



**Cone Seal**

Sea Tech connectors utilize a swivel nut with NPS straight threads and a cone seal. This allows the installer to thread onto NPT, NPS, BSP, and most 1/2" male threads without tools or thread sealant. Simply thread on, hand tight, for a zero leak seal.




Reducing Tee's can be developed by simply snap fitting a Reducing Stem Connector into a Union Tee.



Sea Tech tubing is produced from a high performance, polyethylene material. Sea Tech Tubing is formulated and manufactured in 15MM, 22MM, and 28MM sizes. Sea Tech Tubing is NSF listed, FDA recognized, and available in multiple colors for ease of water line identification.



50' Coils are packaged in a dispensing box.

<b>CUTTER</b>	<b>PART NO.</b>
	1158-1522
<b>REPLACEMENT BLADE</b>	<b>PART NO.</b>
	1159-1522

PART NO.	TUBE SIZE	COLOR	PACKAGE
1505B	15MM	BLUE	5' STRAIGHT LENGTH
1510B	15MM	BLUE	10' STRAIGHT LENGTH
1520B	15MM	BLUE	20' STRAIGHT LENGTH
001550B	15MM	BLUE	50' COIL, BOX
50241	15MM	BLUE	250' COIL
1505R	15MM	RED	5' STRAIGHT LENGTH
1510R	15MM	RED	10' STRAIGHT LENGTH
1520R	15MM	RED	20' STRAIGHT LENGTH
001550R	15MM	RED	50' COIL, BOX
50237	15MM	RED	250' COIL
1505W	15MM	WHITE	5' STRAIGHT LENGTH
1510W	15MM	WHITE	10' STRAIGHT LENGTH
1520W	15MM	WHITE	20' STRAIGHT LENGTH
001550W	15MM	WHITE	50' COIL, BOX
50233	15MM	WHITE	250' COIL
001550G	15MM	GREEN	50' COIL, BOX
CST50241G	15MM	GREEN	250' COIL
2205B	22MM	BLUE	5' STRAIGHT LENGTH
2210B	22MM	BLUE	10' STRAIGHT LENGTH
2220B	22MM	BLUE	20' STRAIGHT LENGTH
50253	22MM	BLUE	250' COIL
2205R	22MM	RED	5' STRAIGHT LENGTH
2210R	22MM	RED	10' STRAIGHT LENGTH
2220R	22MM	RED	20' STRAIGHT LENGTH
50249	22MM	RED	250' COIL
2205W	22MM	WHITE	5' STRAIGHT LENGTH
2210W	22MM	WHITE	10' STRAIGHT LENGTH
2220W	22MM	WHITE	20' STRAIGHT LENGTH
50245	22MM	WHITE	250' COIL
50292	28MM	BLUE	100' COIL
50293	28MM	BLUE	20' STRAIGHT LENGTH
50294	28MM	RED	20' STRAIGHT LENGTH

**TUBING PERFORMANCE RATING:**

Operating Pressure: Vacuum to 160psi  
 Max Temperature: 180°F @ 100psi  
 72°F @ 160psi

To Find a Distributor Near You Call  
**1.888.500.0056**

or visit our website  
[www.seatechinc.com](http://www.seatechinc.com)

# Metric Series

## UNION TEE



PART NO.	TUBE SIZE	PACKAGE
1123-1515	15MM	BULK
001123-1515	15MM	CLAM
1623-2222	22MM	BULK
2123-28	28MM	BULK

## STACKABLE TEE



PART NO.	TUBE SIZE	PACKAGE
1133-1515	15MM	BULK
001133-1515	15MM	CLAM

## FEMALE SWIVEL TEE



PART NO.	TUBE SIZE	THREAD SIZE	PACKAGE
1125-0815	15MM	1/2"NPS	BULK
001125-0815	15MM	1/2"NPS	CLAM

## REDUCING TEE



PART NO.	TUBE SIZE	TUBE SIZE	PACKAGE
1124-0415	15MM	1/4" O.D.	BULK
001124-0415	15MM	1/4" O.D.	CLAM
1624-222215	22MM	15 MM	BULK

## UNION ELBOW



PART NO.	TUBE SIZE	PACKAGE
1117-1515	15MM	BULK
001117-1515	15MM	CLAM
1617-2222	22MM	BULK
2117-28	28MM	BULK

## STACKABLE ELBOW



PART NO.	TUBE SIZE	PACKAGE
1118-1515	15MM	BULK
001118-1515	15MM	CLAM
1618-2222	22MM	BULK

## UNION CONNECTOR



PART NO.	TUBE SIZE	PACKAGE
1115-1515	15MM	BULK
001115-1515	15MM	CLAM
1615-2222	22MM	BULK
2115-28	28MM	BULK

## REDUCING UNION



PART NO.	TUBE SIZE	TUBE SIZE	PACKAGE
1115-0415	15MM	1/4" O.D.	BULK
001115-0415	15MM	1/4" O.D.	CLAM
1116-1015	1/2" CTS	15MM	BULK
001116-1015	1/2" CTS	15MM	CLAM

## UNION CONNECTOR

## FEMALE SWIVEL ELBOW



PART NO.	TUBE SIZE	THREAD SIZE	PACKAGE
1120-0815	15MM	1/2"NPS	BULK
001120-0815	15MM	1/2"NPS	CLAM
1120-1215	15MM	3/4"NPS	BULK
001120-1215	15MM	3/4"NPS	CLAM
1120-1415	15MM	3/4"FGHT	BULK
001120-1415	15MM	3/4"FGHT	CLAM

## REDUCING STEM



PART NO.	TUBE SIZE	STEM SIZE	PACKAGE
1614-1522	15MM	22MM	BULK
2114-2228	22MM	28MM	BULK

## FLANGE MOUNT ELBOW



PART NO.	TUBE SIZE	THREAD SIZE	PACKAGE
1168-0815	15MM	1/2"NPS	BULK

## FEMALE SWIVEL



PART NO.	TUBE SIZE	THREAD SIZE	PACKAGE
1110-0815	15MM	1/2"NPS	BULK
001110-0815	15MM	1/2"NPS	CLAM
1110-1215	15MM	3/4"NPS	BULK
001110-1215	15MM	3/4"NPS	CLAM
2609-1215	15MM	3/4"FGHT	BULK
002609-1215	15MM	3/4"FGHT	CLAM
1607-1222	22MM	3/4"BSP	BULK

## MALE ELBOW



PART NO.	TUBE SIZE	THREAD SIZE	PACKAGE
1119-0815	15MM	1/2"NPT	BULK
001119-0815	15MM	1/2"NPT	CLAM

## MALE CONNECTOR



PART NO.	TUBE SIZE	THREAD SIZE	PACKAGE
2402-0815	15MM	1/2"NPT	BULK
002402-0815	15MM	1/2"NPT	CLAM
2902-1222	22MM	3/4"BSP	BULK

## MALE CONNECTOR (BRASS)



PART NO.	TUBE SIZE	THREAD SIZE	PACKAGE
1201-0815	15MM	1/2"NPT	BULK
1701-1222	22MM	3/4"NPT	BULK

## COMPRESSION CONNECTOR (BRASS)



PART NO.	TUBE SIZE	NUT SIZE	PACKAGE
1212-0615	15MM	3/8"	BULK
1211-0615	15MM	NONE	BULK

## FEMALE STEM (BRASS)



PART NO.	TUBE SIZE	THREAD SIZE	PACKAGE
1226-0415	15MM	1/4"NPT	BULK
1226-0615	15MM	3/8"NPT	BULK
1226-0815	15MM	1/2"NPT	BULK
1726-1222	22MM	3/4"NPT	BULK
1726-1622	22MM	1"NPT	BULK
2226-1628	28MM	1"NPT	BULK

## MALE STEM (BRASS)



PART NO.	TUBE SIZE	THREAD SIZE	PACKAGE
1229-0415	15MM	1/4"NPT	BULK
1229-0615	15MM	3/8"NPT	BULK
1229-0815	15MM	1/2"NPT	BULK
1729-1222	22MM	3/4"NPT	BULK
1729-1622	22MM	1"NPT	BULK
2229-1628	28MM	1"NPT	BULK

## UNION PUMP CONNECTOR



PART NO.	TUBE SIZE	PACKAGE
2475-15	15MM	BULK
002475-15	15MM	CLAM

## ELBOW PUMP CONNECTOR



PART NO.	TUBE SIZE	PACKAGE
2476-15	15MM	BULK
002476-15	15MM	CLAM

## HOSE BARB CONNECTOR



PART NO.	TUBE SIZE	BARB SIZE	PACKAGE
1413-0615	15MM	3/8"H.B.	BULK
2413-0815	15MM	1/2"H.B.	BULK
002413-0815	15MM	1/2"H.B.	CLAM
2913-1222	22MM	3/4"H.B.	BULK

# Metric Series

## END STOP



PART NO.	TUBE SIZE	PACKAGE
1145-15	15MM	BULK
001145-15	15MM	CLAM
1645-22	22MM	BULK

## END PLUG



PART NO.	TUBE SIZE	PACKAGE
1146-15	15MM	BULK
1646-22	22MM	BULK

## STOP VALVE



PART NO.	TUBE SIZE	PACKAGE
2439-1515	15MM	BULK
002439-1515	15MM	CLAM
2939-2222	22MM	BULK

## REDUCING VALVE



PART NO.	TUBE SIZE	TUBE SIZE	PACKAGE
2439-0415	15MM	1/4"O.D.	BULK
002439-0415	15MM	1/4"O.D.	CLAM

## STACKABLE VALVE



PART NO.	STEM SIZE	TUBE SIZE	PACKAGE
2443-0415	15MM	1/4"O.D.	BULK
002443-0415	15MM	1/4"O.D.	CLAM
2440-1515	15MM	15MM	BULK
002440-1515	15MM	15MM	CLAM

## TEE VALVE



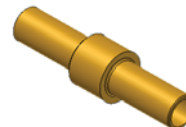
PART NO.	TUBE SIZE	TUBE SIZE	PACKAGE
2444-0415	15MM	1/4"O.D.	BULK

## MALE STEM CHECK VALVE (BRASS)



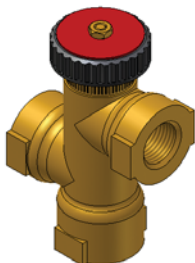
PART NO.	STEM SIZE	THREAD SIZE	PACKAGE
1235-0815	15MM	1/2"NPT	BULK
001235-0815	15MM	1/2"NPT	CLAM

## STEM CHECK VALVE (BRASS)



PART NO.	STEM SIZE	PACKAGE
1237-15	15MM	BULK
001237-15	15MM	CLAM

## TEMPERATURE MIXING VALVE (BRASS)



PART NO.	THREAD SIZE	PACKAGE
12142-08	1/2"NPT	BULK

## PIPE CLIP



PART NO.	TUBE SIZE	PACKAGE
2370-1557	15MM	BULK
002370-1557	15MM	CLAM
2370-2257	22MM	BULK
2370-2857	28MM	BULK

## ELBOW CLIP



PART NO.	TUBE SIZE	PACKAGE
2349-15	15MM	BULK
2349-22	22MM	BULK
2349-28	28MM	BULK

## COLLET COVER



PART NO.	COLOR	TUBE SIZE	PACKAGE
2154-15	RED	15MM	BULK
2155-15	WHITE	15MM	BULK
2156-15	BLUE	15MM	BULK
2157-15	BLACK	15MM	BULK
2954-22	RED	22MM	BULK
2955-22	WHITE	22MM	BULK
2956-22	BLUE	22MM	BULK

## WASHING MACHINE HOSE KIT



PART NO.	TUBE SIZE	THREAD SIZE	PACKAGE
UWM-100-48	15MM	3/4"FGHT	BULK

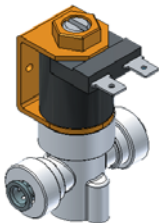
## ELECTRIC STEM VALVE (BRASS)



PART NO.	TUBE SIZE	VOLT	PACKAGE
12104-0415-12	15MM	12VDC	BULK
12104-0415-24	15MM	24VDC	BULK

VALVE IS PACKAGED WITH ONE 1/4" QUICK CONNECT FITTING

## ELECTRIC VALVE (PLASTIC)



PART NO.	TUBE SIZE	VOLTS	PACKAGE
24104-12	1/4"O.D.	12VDC	BULK
24104-24	1/4"O.D.	24VDC	BULK

## DECK SPRAYER & FITTINGS



PART NO.	OUTLET STYLE	PACKAGE
41106	SPRAY HEAD	BULK
41106-0206	1/8" BARB STRAIGHT	BULK
41107-0206	1/8" BARB ELBOW	BULK

(Thru. Deck is packaged with one 1/4" Union Elbow as shown)

## MINI UNION TEE ( For Poly Tubing)



PART NO.	TUBE SIZE	PACKAGE
4023-0404	1/4"O.D.	BULK

## O-RING ASSEMBLY



PART NO.	TUBE SIZE	PACKAGE
159-15	15MM	BULK
159-22	22MM	BULK

## CONE SEAL



PART NO.	TUBE SIZE	PACKAGE
161-08	1/2"NPS	BULK
161-12	3/4"NPS & FGHT	BULK

## POLY TUBING



PART NO.	TUBE SIZE	COIL SIZE
50256	1/4" O.D.	100' COIL

# Metric Series Manifolds

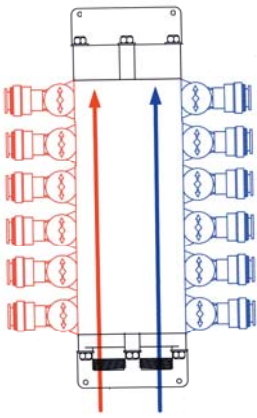
Sea Tech Manifolds operate much like an electrical breaker box. The main water supply lines bring water into the manifold and individual distribution lines move water out to each fixture. All outlets have a built-in valve which allows you the ability to stop the water flow to any single fixture without shutting down the entire water system.

## FEATURES

- Operating Pressure: Vacuum to 100psi
- Temperature Range: 10°F to +180°F
- Complies with NSF and FDA standards
- Available in custom configurations
- Includes mounting brackets and labels

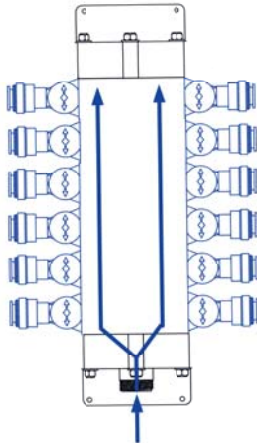
### Style A

2 Male Inlets



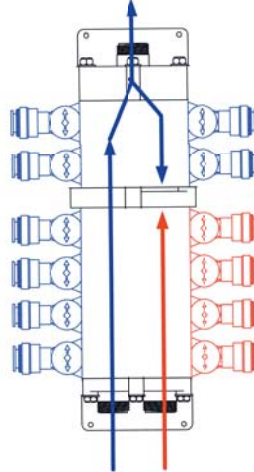
### Style B

1 Male Inlet



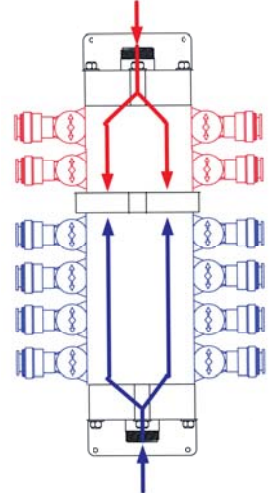
### Style E

2 Male Inlets  
1 Male Outlet



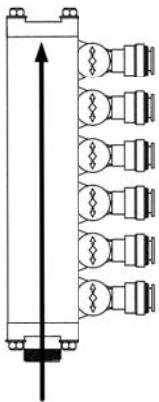
### Style G

2 Male Inlets



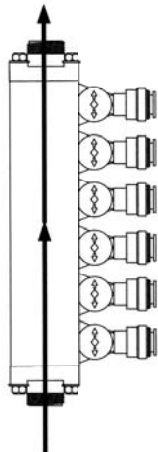
### Style B

1 Male Inlet  
Single Temperature  
Use (Hot or Cold)



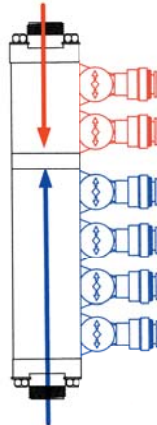
### Style C

2 Male Inlets  
Single Temperature  
Use (Hot or Cold)



### Style G

2 Male Inlets  
Dual Temperature  
Use (Hot & Cold)



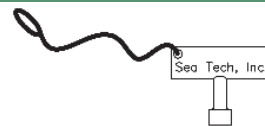
**Note:** Add a #8 to the end of the part number to designate 1/2" NPT Inlets instead of 1" on Single Side Manifolds only

## END CAP FOR INLETS (BRASS)



PART NO.  
2274-16

## MANIFOLD VALVE KEY ASSEMBLY



PART NO.  
1175-09

## MANIFOLD VALVE REPLACEMENT KIT



PART NO.  
1172-09

## MANIFOLD INLET ELBOW



PART NO.	SIZE
SF-989	1/2" NPT

## INLET STEM FITTING (BRASS)

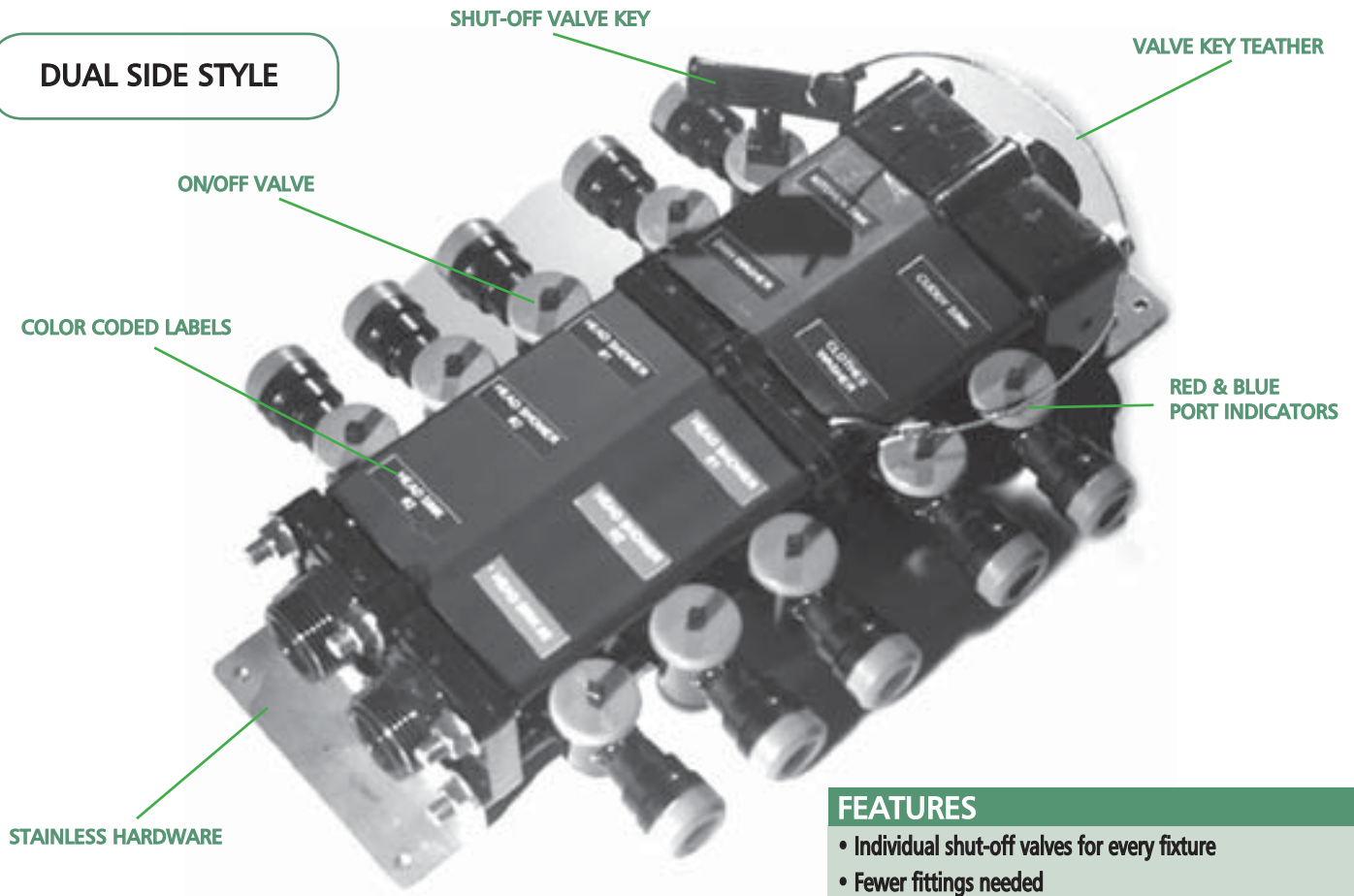


PART NO.	STEM SIZE
2262-15	15MM
2262-22	22MM
2262-28	28MM



# Metric Series Manifolds

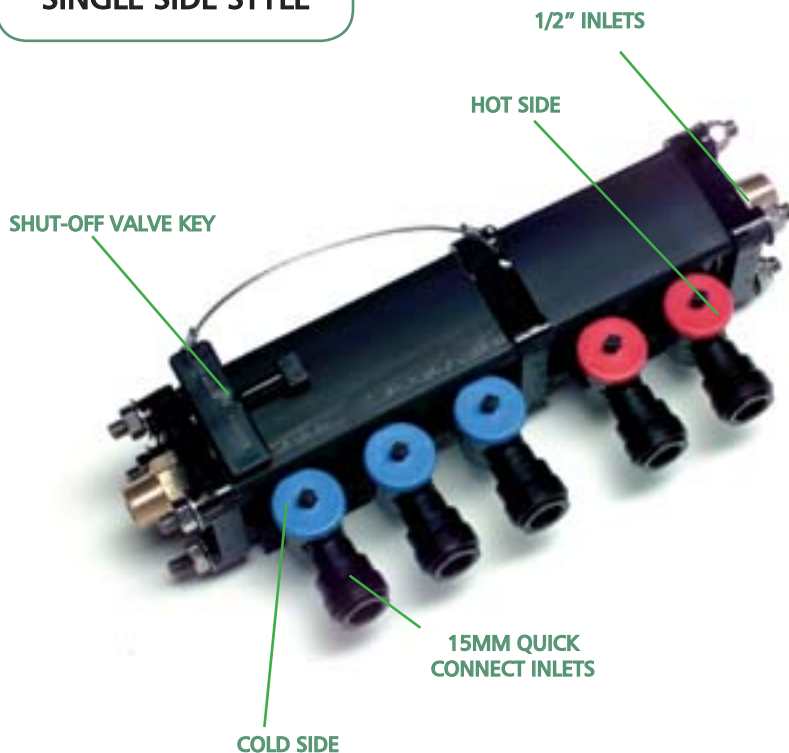
## DUAL SIDE STYLE



### FEATURES

- Individual shut-off valves for every fixture
- Fewer fittings needed
- Quick and efficient installation
- Available with either Stainless Steel or Zinc plated hardware
- Complete central control of water system
- Faster hot water delivery
- Equalized water flow
- Mounting brackets and labels included

## SINGLE SIDE STYLE



### ORDERING INFORMATION

SPM - DA - 12 - 06 S8

D=DUAL SIDE

S=SINGLE SIDE

INLET PORT STYLE

TOTAL NUMBER OF PORTS

TOTAL NUMBER OF COLD PORTS

HARDWARE MATERIAL

S=STAINLESS STEEL

Z=ZINC PLATED

8=1/2" INLETS

(SINGLE SIDE ONLY)

# Supercoil System



## SUPERCOIL

High performance U.V. resistant wash-down hose is made from polyurethane tubing, plated brass crimps, and corrosion resistance plastic hose ends. The SuperCoil hose is available in Blue, White, 15ft, 25ft, and 50ft and is guaranteed not to kink or fail.



## SUPERCOIL™

All coils come with U.V. resist plastic garden hose ends.

PART NO.	COLOR	LENGTH
EC15201BX	BLUE	15'
EC25201BX	BLUE	25'
EC50201BX	BLUE	50'

PART NO.	COLOR	LENGTH
EC15201WX	WHITE	15'
EC25201WX	WHITE	25'
EC50201WX	WHITE	50'

## DECKCOILS™

With 1/2" MNPT termination and water tight deck plate



PART NO.	COLOR	LENGTH
SC1512	BLUE	15'
SC1510	WHITE	15'
SC2512	BLUE	25'
SC2510	WHITE	25'



## SPEED-TAP™

Washdown Fitting incorporates an automatic shut-off valve for ease of use and is flush mounted.

PART NO.	COLOR
ST301	WHITE HOUSING WITH HOSE ADAPTOR
ST300	WHITE HOUSING WITHOUT HOSE ADAPTOR
ST101	BLACK HOUSING WITH HOSE ADAPTOR
ST100	BLACK HOUSING WITHOUT HOSE ADAPTOR



## SPEED-TAP HOSE ADAPTOR

This unique adaptor threads onto any standard garden hose fitting to interconnect with the Speed-Tap.

PART NO.	COLOR
MSP100	WITH AUTO SHUT-OFF
MSP101	NO AUTO SHUT-OFF



## SIDE MOUNT

Easily mounts with four screws and one water connection. Fast to use and fast to store makes this product excellent for cockpit and engine room wash-downs. All Side Mounts come with a white housing, SuperCoil, and sprayer.

PART NO.	COLOR	LENGTH
SM1510	WHITE	15'
SM2510	WHITE	25'
SM1512	BLUE	15'
SM2512	BLUE	25'



PART NO.
ET100

## ECONO-TAP

Is produced from a high performance U.V. resistant plastic. Easy to mount with three screw holes in its flange. Inlet is 1/2" male thread, outlet is standard 3/4" male garden hose thread.



## Washdown Kit

Sea Tech, Inc. offers the only complete integrated washdown package.

Included in the kit is Sea Tech's reliable, high quality, pump, snap-on strainer, flush mounted quick connect, coil washdown hose, sprayer, and all necessary fittings. To install a kit simply mount all components, attach the fittings, and use any standard 1/2" tubing. Sea Tech fittings connect with plastic tubing, CPVC, and copper. Sea Tech's quick connect technology allows for installation without the need for tools.

### WASHDOWN KIT

PART NO.	FLOW	VOLTS	HOSE LENGTH
30-15203	3GPM	12VDC	15ft
30-25203	3.6GPM	12VDC	25ft
30-50203	4.5GPM	12VDC	50ft

### PUMPS

PART NO.	FLOW	VOLTS
2394-3012	3.0GPM	12VDC
2394-3612	3.6GPM	12VDC
2394-4512	4.5GPM	12VDC

To Find a Distributor Near You Call  
**1.888.500.0056**

or visit the website  
[www.seatechinc.com](http://www.seatechinc.com)



200 Willard St.

Wilmington, NC 28401

Tel: 1.888.500.0056

Fax: 910.763.4684

[www.seatechinc.com](http://www.seatechinc.com)

Distributed by:

