

TIFFIN MOTORHOMES
WHEREVER YOU GO, WE GO.

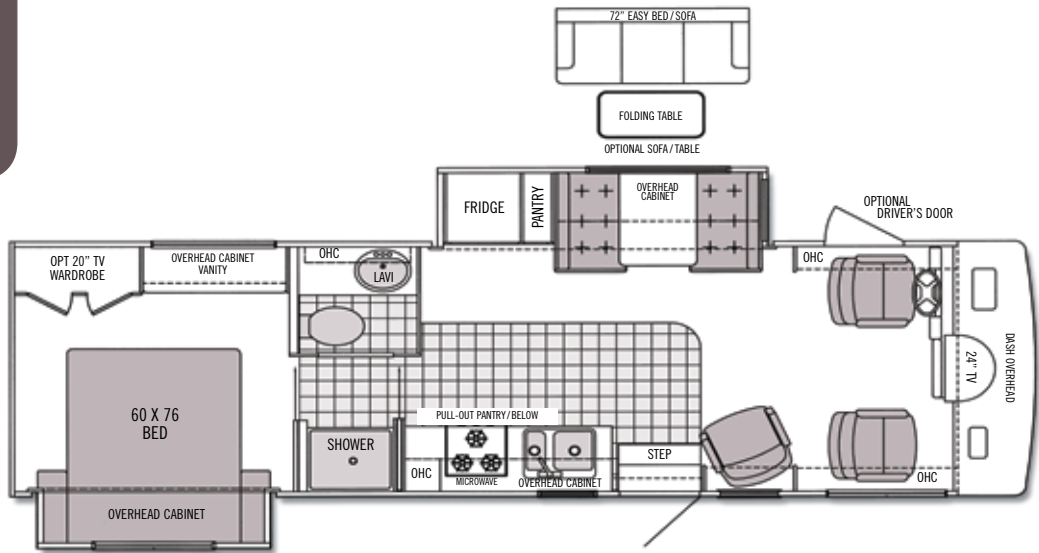
2006 SPECIFICATIONS

TIFFIN

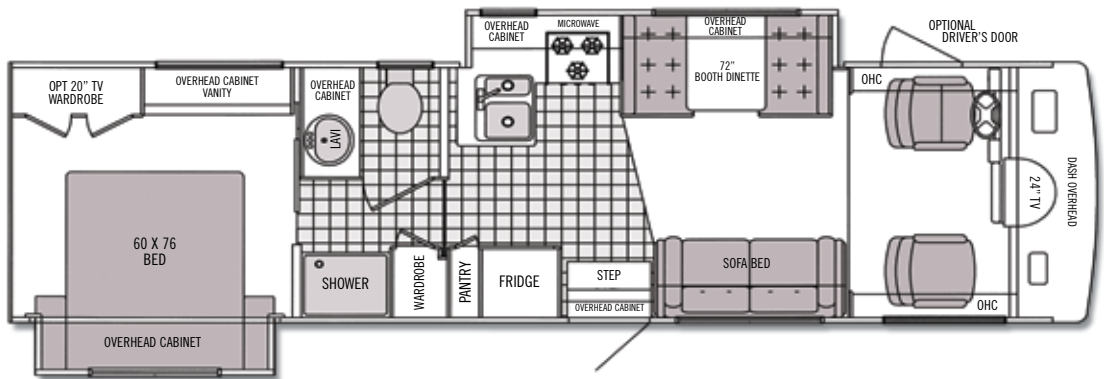
ALLEGRO

FLOOR PLANS

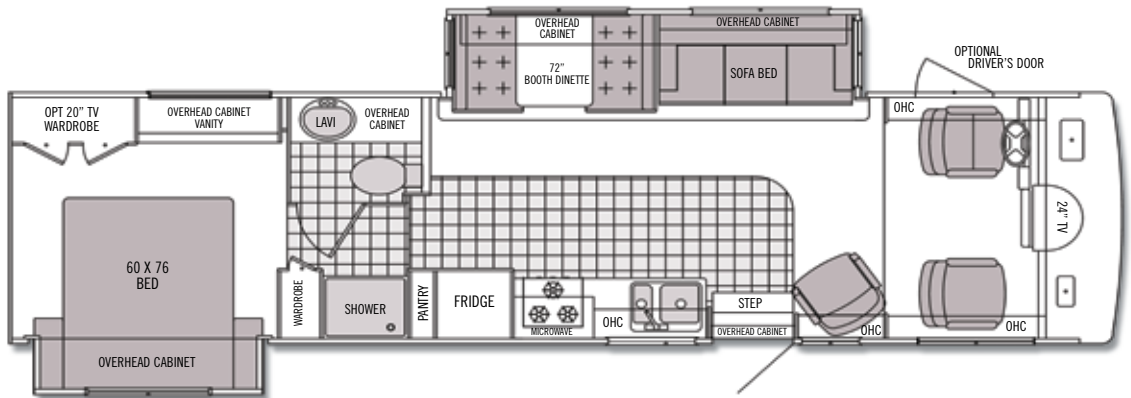
28 DA



30 DA

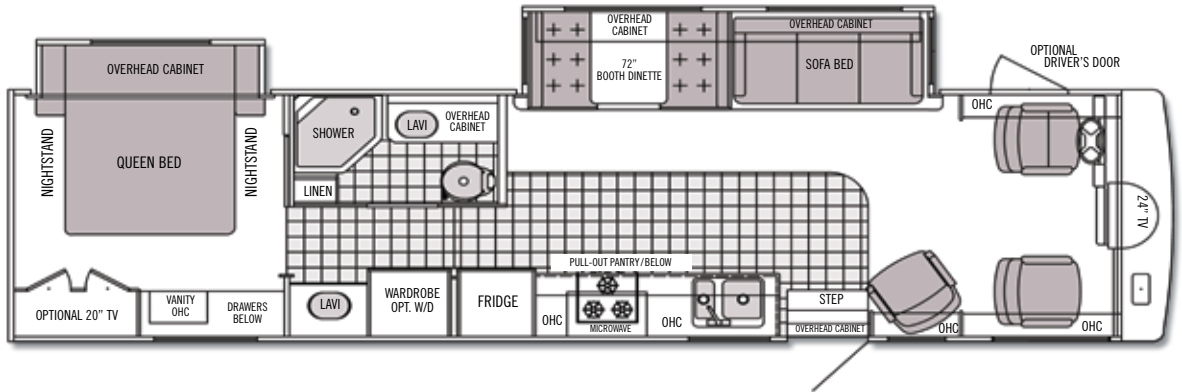


32 BA

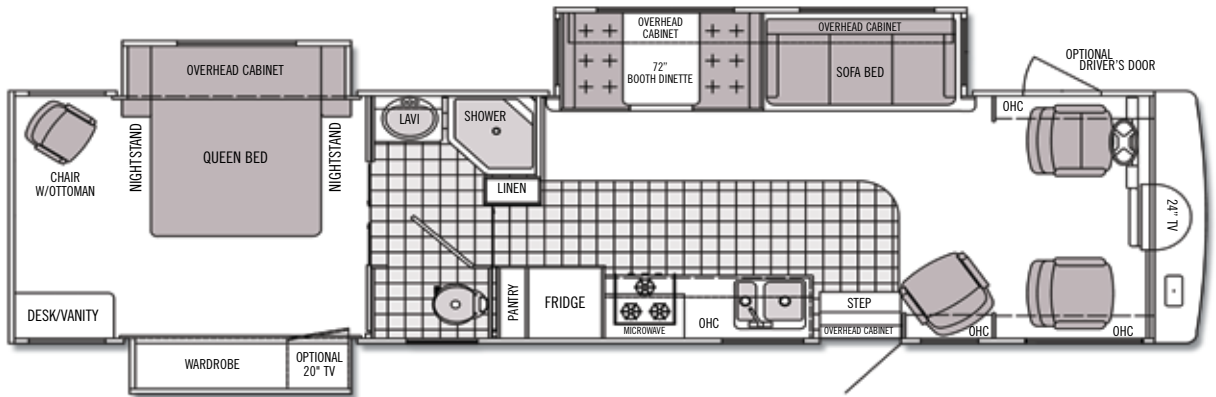


Additional floorplans may be available on our website: www.tiffinmotorhomes.com
Aside from our unparalleled customer service, one of the things that Tiffin has been known for over the years is innovative floorplans.

34 WA



35 TSA



CHILI SPICE



MOCHA FROST

TIFFIN
ALLEGRO
PAINT COLORS

Tiffin Motorhomes, Inc. 105 2nd Street NW Red Bay, AL 35582
 Call 256.356.8661 Fax 256.356.8219 www.tiffinmotorhomes.com
 For Parts and Service Call 256.356.0261

The following names are registered trademarks of Tiffin Motorhomes:
 Open Road®, Phaeton®, Allegro®, Allegro Bay®, Allegro Bus®, Zephyr®, Roughing It Smoothly®, and Pusher®.

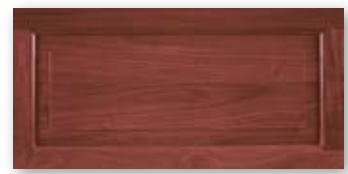
TIFFIN

ALLEGRO

CABINETS
FABRICS
AND SPECS



Natural Maple



Cherry Bark



Oak



Carpet

CAPPUCCINO



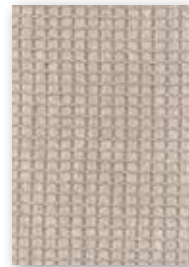
Bedroom



Bedroom Accent



Sofa/Chair



Living Area Accent



Dinette

DESERT SAND



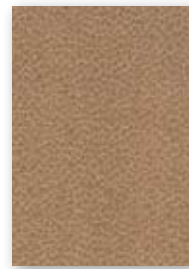
Bedroom



Bedroom Accent



Sofa/Chair



Living Area Accent



Dinette

STONE



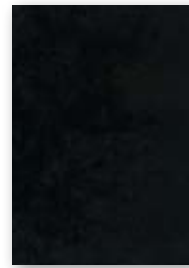
Bedroom



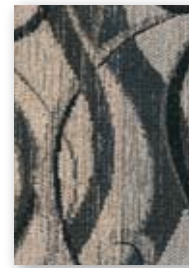
Bedroom Accent



Sofa/Chair



Living Area Accent



Dinette

Our fabric designs and choices of wood grain are sure to suit every taste. All cabinet finishes are available in combination with all fabric schemes.

AUTOMOTIVE

STANDARD EQUIPMENT ON ALL MODELS:

- TorqShift® 5-Speed Automatic Overdrive with Tow/Haul Mode (Ford)
- 1000MH Series 5-Speed Automatic Allison Transmission with Overdrive (Workhorse)
- Leveling Jacks
- Cruise Control
- Emergency Start Switch

FORD CHASSIS	MODEL	28 DA	30 DA	32 BA	34 WA	35 TSA
Engine - 362 HP		6.8 L V10	6.8 L V10	6.8 L V10	6.8 L V10	6.8 L V10
Torque (Lb.-Ft.)		457 @ 3250	457 @ 3250	457 @ 3250	457 @ 3250	457 @ 3250
GVWR		20,500	20,500	20,500	20,500	22,000
GAWR – Front		7,000	7,000	7,000	7,000	7,500
GAWR – Rear		13,500	13,500	13,500	13,500	14,000
GCWR		26,000	26,000	26,000	26,000	26,000
UVW		15,300	15,300	16,910	17,160	17,730
Overall Height with Roof Air		12' 3"	12' 3"	12' 3"	12' 3"	12' 3"
Wheel Base		208	208	228	228	242
Tire Size		245 / 70R 19.5	245 / 70R 19.5	245 / 70R 19.5	245 / 70R 19.5	245 / 70R 19.5
Fuel Tank (Gallons)		75	75	75	75	75
Alternator Amps		130	130	130	130	130
Trailer Hitch Capacity		5,000	5,000	5,000	5,000	5,000

WORKHORSE CHASSIS	MODEL	28 DA	30 DA	32 BA	34 WA	35 TSA
Engine - 340 HP		NA	8.1 L V8	8.1 L V8	8.1 L V8	8.1 L V8
Torque (Lb.-Ft.)		NA	455 @ 3200	455 @ 3200	455 @ 3200	455 @ 3200
GVWR		NA	20,700	20,700	20,700	22,000
GAWR – Front		NA	7,500	7,500	7,500	7,500
GAWR – Rear		NA	13,500	13,500	13,500	13,500
GCWR		NA	26,000	26,000	26,000	26,000
UVW		NA	15,220	16,820	17,280	17,780
Overall Height with Roof Air		NA	12' 3"	12' 3"	12' 3"	12' 3"
Wheel Base		NA	208	228	228	242
Tire Size		NA	245 / 70R 19.5	245 / 70R 19.5	245 / 70R 19.5	245 / 70R 19.5
Fuel Tank (Gallons)		NA	75	75	75	75
Alternator Amps		NA	130	130	130	130
Trailer Hitch Capacity		NA	5,000	5,000	5,000	5,000

OVERALL	MODEL	28 DA	30 DA	32 BA	34 WA	35 TSA
Overall Length – Approximately		27' 7"	31' 3"	32' 10"	34' 7"	35' 7"
Interior Height		80"	80"	80"	80"	80"
Overall Width		101"	101"	101"	101"	101"
Interior Width		96"	96"	96"	96"	96"
Fresh Water (Gallons)		53	53	53	53	53
Black Water (Gallons)		35	35	35	35	35
Grey Water (Gallons)		40	70	70	70	70
LPG Tank (Gallons; can only be filled to 80% capacity)		24	24	24	24	24
Minimum Garage Height		13'	13'	13'	13'	13'

STRUCTURAL

STANDARD EQUIPMENT ON ALL MODELS:

- Laminated Floor, Sidewall & Roof
- Steel / Aluminum Reinforced Structure

EXTERIOR

STANDARD EQUIPMENT ON ALL MODELS:

- Fiberglass Front & Rear Caps
- Heated Power Mirrors
- Ridged Long-Life Storage Boxes
- Exterior Rinse Hose/Shower
- Tinted One-Piece Windshield
- Gel-Coat Fiberglass Walls
- Single Handle Lockable Storage Door Latches
- Back-up Monitor
- 4.0 Kw Onan Generator (Will operate only one roof A/C unit.)
- Exterior Graphics & Paint
- Heated Water and Holding Tank Compartments
- 110v Exterior Receptacle
- 1 - 13,500 BTU High Profile Roof A/C (High Efficiency)
- Exterior Patio Light
- Two 6v Auxiliary Batteries
- 110v/12v Converter
- Double Electric Step
- Manual Patio Awning
- Park Telephone Ready
- Undercoating
- 1/4" Thick Single Pane Windows
- Slideout Awning(s)
- TV Antenna
- Domed Fiberglass Roof
- Horizontal Mounted Wipers
- Wheel Liners
- Cable Ready TV
- Roof Ladder
- Exterior Storage Doors with Gas Shocks
- Black Holding Tank Flush System

	MODEL	28 DA	30 DA	32 BA	34 WA	35 TSA
5.5 Kw Onan Generator <small>(Will operate two roof A/C units and no other appliances at the same time. Includes 50 Amp Service)</small>		0	0	0	0	0
7.0 Kw Onan Generator <small>(Includes 50 Amp Service)</small>		0	0	0	0	0
Driver's Door with Power Window		0	0	0	0	0
Semi-Automatic King Dome Satellite		0	0	0	0	0
Cellular Phone Antenna		0	0	0	0	0

EXTERIOR cont'd

	MODEL	28 DA	30 DA	32 BA	34 WA	35 TSA
2nd - 13,500 BTU High Profile Roof A/C (High Efficiency)		0	0	0	0	0
1 - 15,000 BTU High Profile Roof A/C with Heat Pump <small>(Requires 5.5 or 7.0 generator-Front Only)</small>		0	0	0	0	0
TruCenter Steering System		NA	0	0	0	0

DRIVER'S COMPARTMENT

STANDARD EQUIPMENT ON ALL MODELS:

- Entry Floor Light
- Step Switch and 12v Disconnect Switch
- Snack / Beverage Tray
- Non-powered Cloth Passenger & Driver Seats (Flexsteel®)
- Padded Dash
- Lighted Instrument Panel
- Single CD Player AM/FM Stereo
- 12v Dash Receptacle
- Tilt Steering Wheel
- Dual Dash Fans
- Windshield Privacy Curtain
- 24" Color Flatscreen TV (Front)
- Fire Extinguisher

	MODEL	28 DA	30 DA	32 BA	34 WA	35 TSA
Powered Cloth Driver Seat (Flexsteel®)		0	0	0	0	0

LIVING AREA/DINETTE

STANDARD EQUIPMENT ON ALL MODELS:

- Large Pull-out Storage Drawers in Booth Dinette
- Booth Dinette

	MODEL	28 DA	30 DA	32 BA	34 WA	35 TSA
Cloth Swivel Chair		S	NA	S	S	S
Cloth Sofa Bed		NA	S	S	S	S
Cloth Hide-a-bed		NA	NA	0	0	0
Sofa In Place Of Booth Dinette		0	NA	NA	NA	NA
VCR		0	0	0	0	0
DVD Player		0	0	0	0	0

KITCHEN

STANDARD EQUIPMENT ON ALL MODELS:

- Single Lever Chrome Sink Faucet
- Double Bowl Kitchen Sink
- 3-Burner Cooktop with Oven
- Microwave
- 8 Cu. Ft. Refrigerator

	MODEL	28 DA	30 DA	32 BA	34 WA	35 TSA
Convection Microwave		0	0	0	0	0
8 Cu. Ft. Refrigerator with Ice Maker		0	0	0	0	0
Solid Wood Refrigerator Panels		0	0	0	0	0

BATH

STANDARD EQUIPMENT ON ALL MODELS:

- Medicine Cabinet
- Skylight in Shower
- Toilet
- Fiberglass Molded Tub or Shower

	MODEL	28 DA	30 DA	32 BA	34 WA	35 TSA
Additional Fantastic® Fan (Water Closet Only)		0	0	0	0	0

BEDROOM

STANDARD EQUIPMENT ON ALL MODELS:

- Wardrobe
- Bed Comforter
- Inner Spring Mattress
- Carbon Monoxide Detector
- LPG Leak Detector
- Phone Jack

	MODEL	28 DA	30 DA	32 BA	34 WA	35 TSA
20" Color TV		0	0	0	0	0
Bedroom Day / Night Shades		0	0	0	0	0
Mirrored Vanity		S	S	S	S	NA

GENERAL INTERIOR

STANDARD EQUIPMENT ON ALL MODELS:

- Raised Panel Cabinet Doors
- Vinyl Headliner
- Oak Cabinet Solid Doors & Drawer Fronts
- Vinyl Tile Flooring in Kitchen & Bath
- Carpeting in Bedroom & Driver's Compartment
- Scotchgard® Treated Carpet and Fabrics
- Day / Night Pleated Shades in Living Room
- Power Roof Vents
- Tank Level Monitor System
- Smoke Detector
- 6-Gal DSI Gas / Electric Water Heater (Electric not available on units with a 4K generator)
- Compartment Door with Single Point Latch

	MODEL	28 DA	30 DA	32 BA	34 WA	35 TSA
Vacuum Cleaner System		0	0	0	0	0
1 - 30,000 BTU Ducted Furnace		S	S	NA	NA	NA
1 - 35,000 BTU Ducted Furnace		NA	NA	S	S	S
Washer / Dryer		NA	NA	NA	0	NA
Natural Maple Solid Door & Drawer Front		0	0	0	0	0
Cherry Bark Solid Door & Drawer Front		0	0	0	0	0

All options may not be available in all models. Because of progressive improvements, specifications, standard and optional equipment are subject to change without notice or obligation.